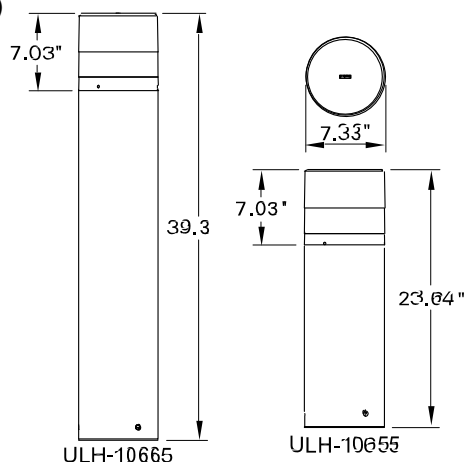


INSTALLATION AND SERVICE MANUAL

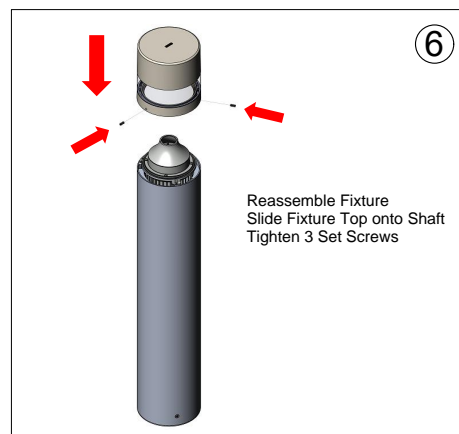
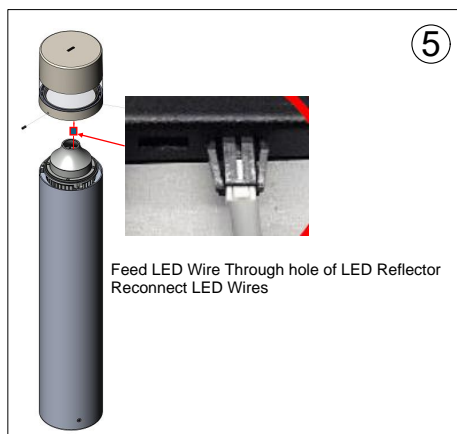
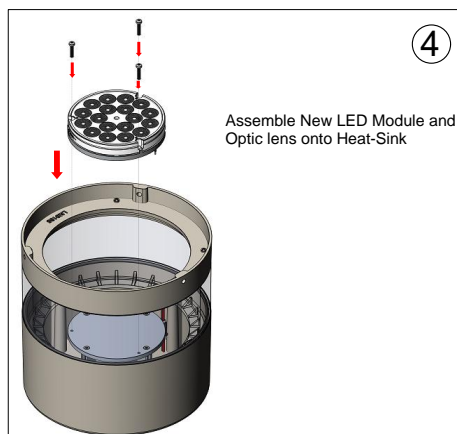
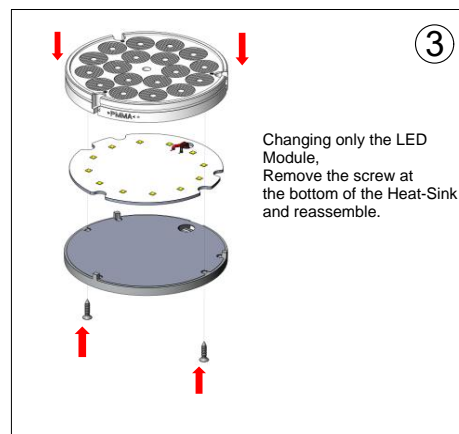
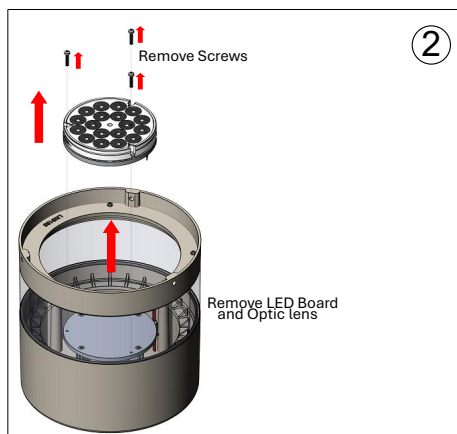
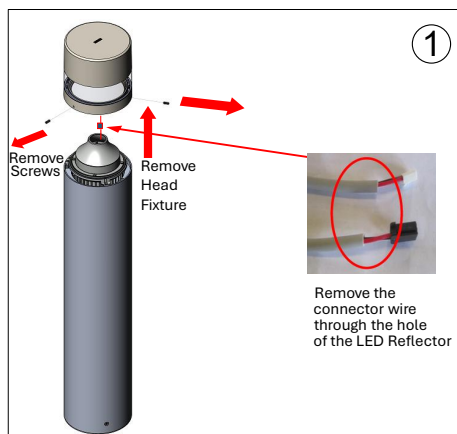
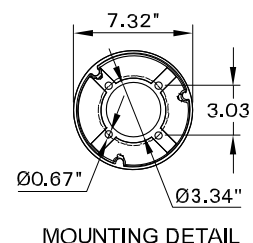
LIGMAN
LIGHTING USA

Installation Instructions for LED Module Replacement ULH-10665

Product drawing (dimensions)



SUITABLE FOR WET LOCATIONS



Notice to Installer

Wiring Instruction ⚠ Warning:

- Risk of Fire and Electrical Shock, This fixture must be installed only by a qualified electrician, Installation must adhere to the National Electrical Code (NEC) and all applicable local and federal regulations.
- Always disconnect power before servicing the fixture.