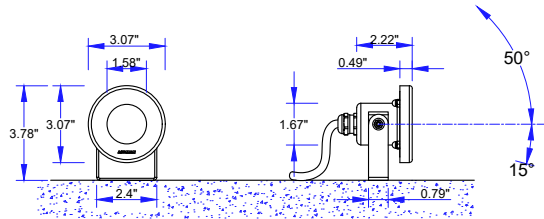


# INSTALLATION AND SERVICE MANUAL

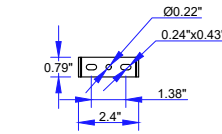
For Installation of Funen 1,2,3 Underwater lighting LED.  
Model. UFUN-50003, UFUN-50013 and UFUN-50023

## Product drawing (dimensions)

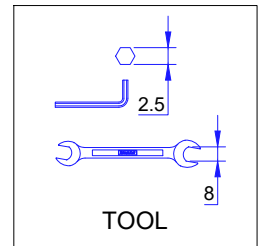
CE IP68 IK07 CLASS III 0.3m



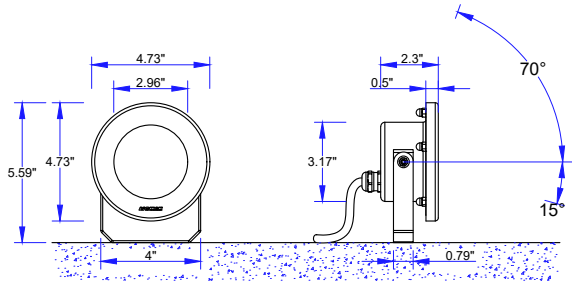
UFUN-50003



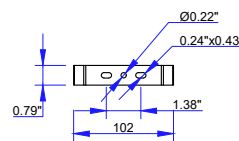
MOUNTING DETAIL



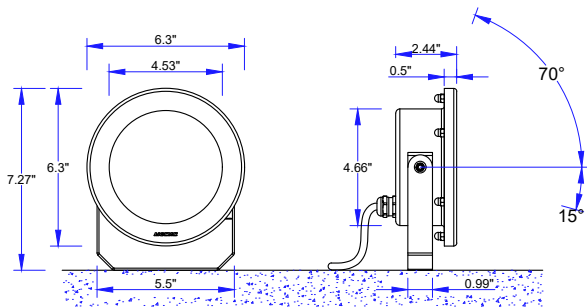
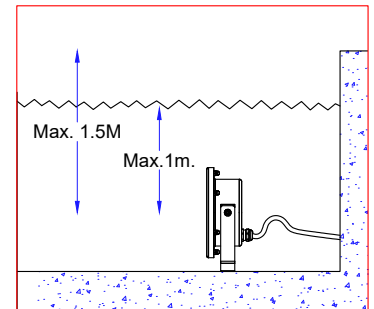
TOOL



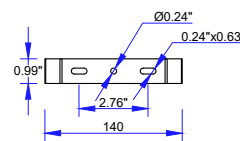
UFUN-50013



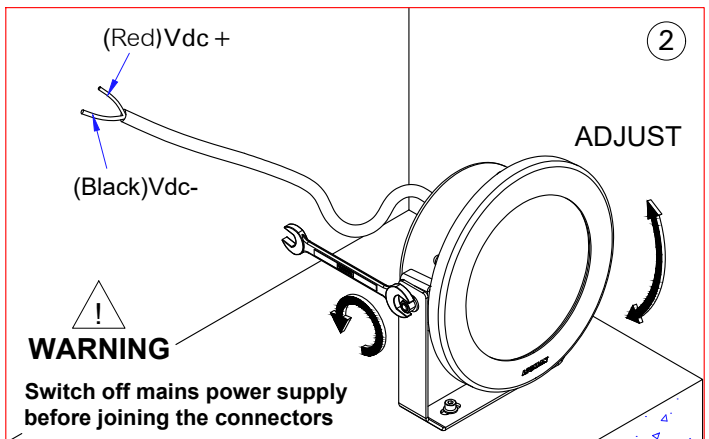
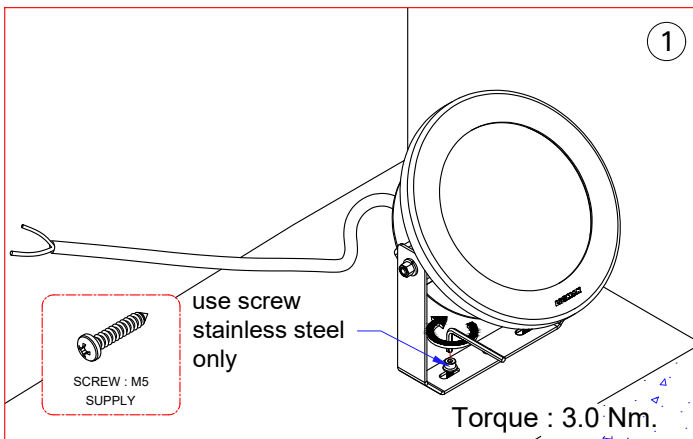
MOUNTING DETAIL



UFUN-50023



MOUNTING DETAIL



- LIGMAN standard products are supplied with the control gear 24Vdc.  
The control gear for other voltages and frequencies is available upon request, please consult us for more details.
- LIGMAN luminaires are designed to conform IEC 60598 2-18 standard.  
Technical amendments and modifications techniques reserved.

**Ligman Lighting USA**

7144 NE Progress Court, Hillsboro  
Oregon, 97124, USA  
Tel : 503 645 0500 | Fax : 503 645 8100

[www.ligmanlightingusa.com](http://www.ligmanlightingusa.com)

