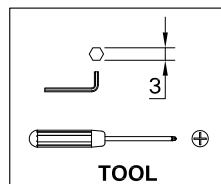
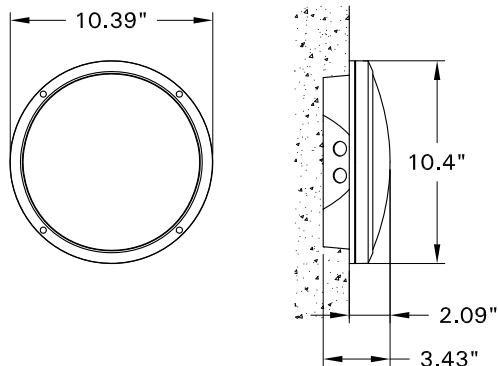


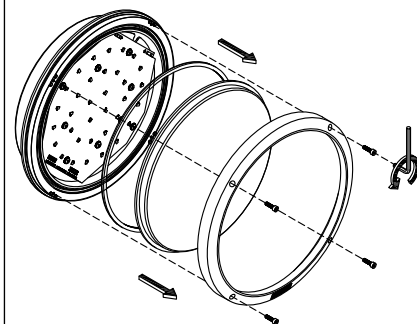
For installation of Sandy semi-recessed wall light LED.
Model. USA-40130, USA-40140, USA-40149, USA-40159, USA-40170, USA-40180.

Product drawing (dimensions)

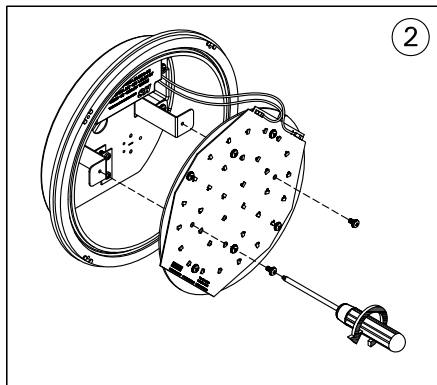
SUITABLE FOR WET LOCATIONS



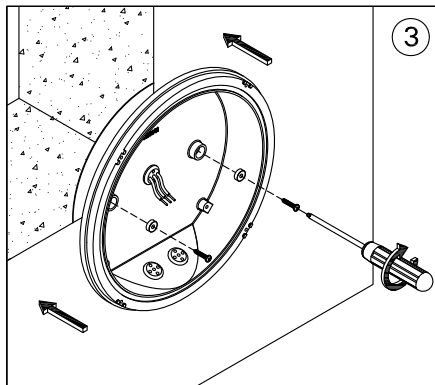
1



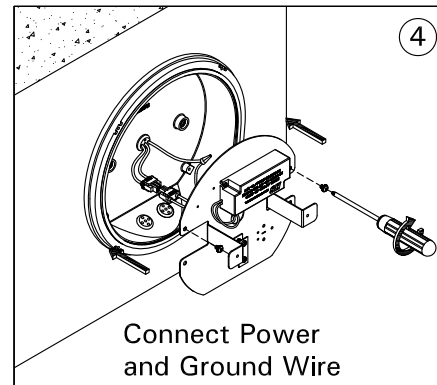
2



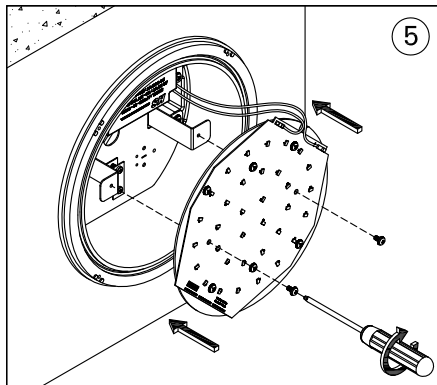
3



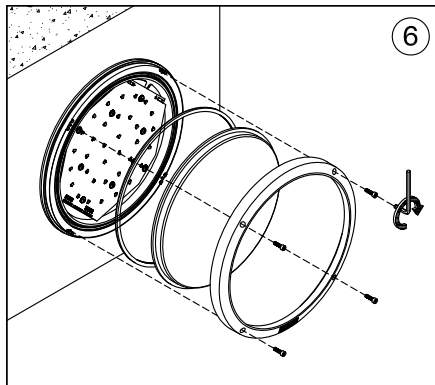
4



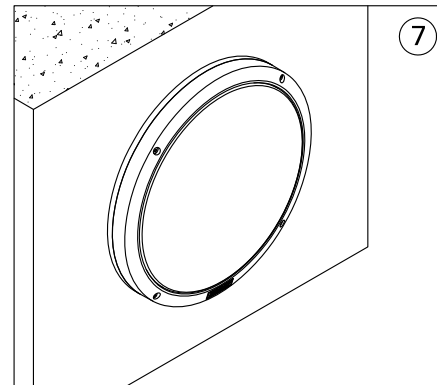
5



6



7



Notice to installer :

1. **WIRING INSTRUCTIONS** Warning : RISK OF FIRE AND ELECTRICAL SHOCK. : FIXTURE MUST BE INSTALLED BY A QUALIFIED ELECTRICIAN ONLY>FIXTURE IS INTENDED FOR INSTALLATION IN ACCORDANCE WITH THE NATIONAL ELECTRICAL CODE, LOCAL AND FEDERAL CODE SPECIFICATIONS. DISCONNECT POWER BEFORE SERVICING.
2. This fixture has a **VOLTAGE SPECIFIC BALLAST**, Check that the supply voltage is the same as the installed ballast voltage.

Ligman Lighting USA

7144 NW Progress Court, Hillsboro
Oregon, 97124, USA
Tel : 503 645 0500 | Fax : 503 645 8100

www.ligmanlightingusa.com

U 40130/20/06/14/REV.0
1/1



FM-TS-13/25-05-2007-REV.2