

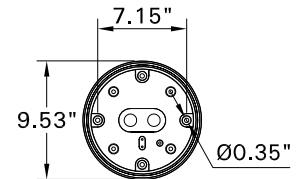
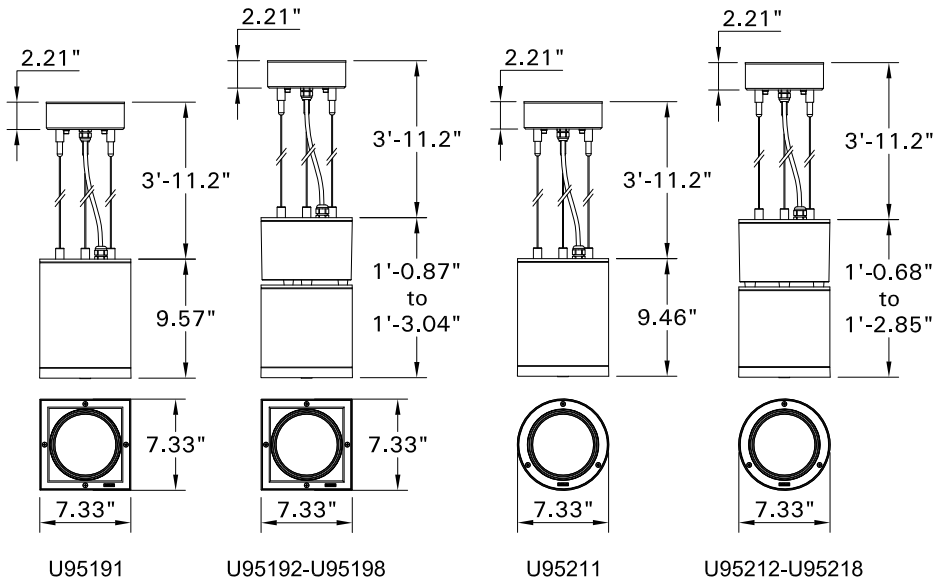
INSTALLATION AND SERVICE MANUAL



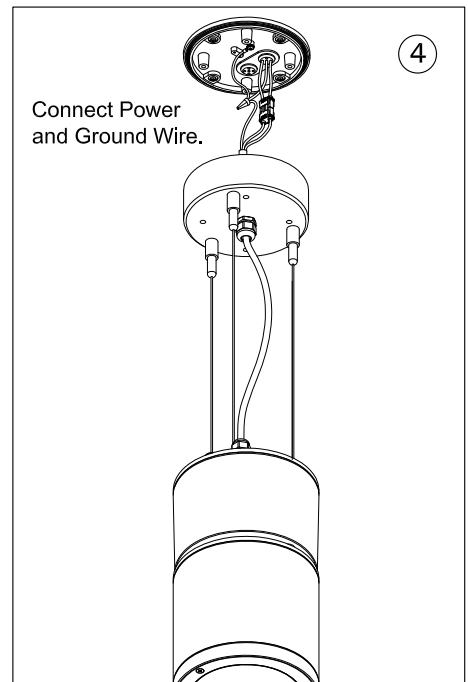
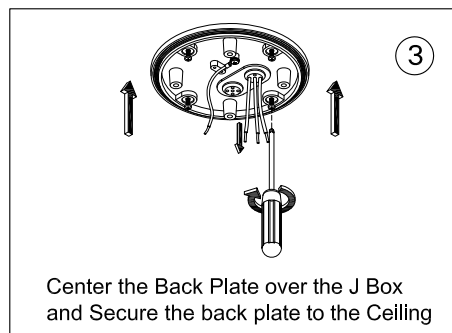
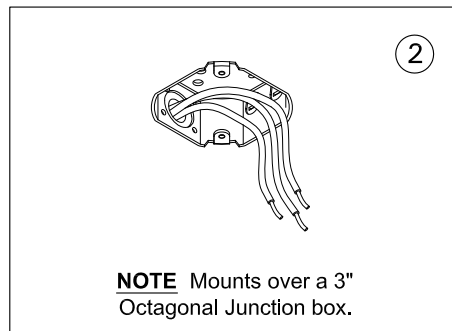
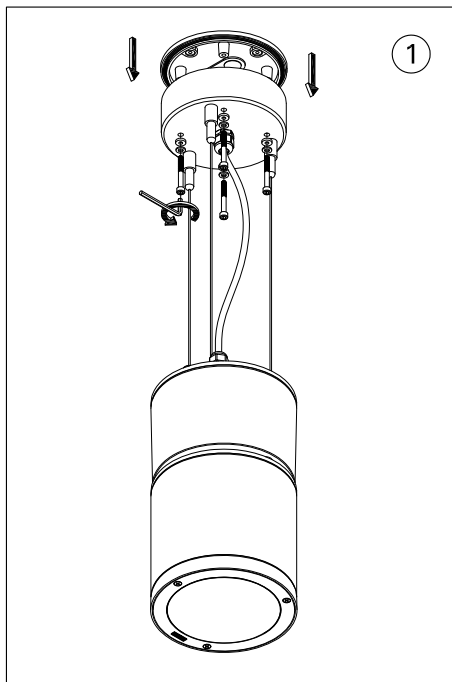
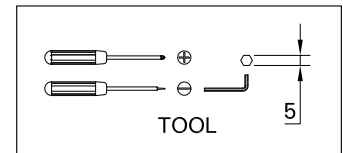
For installation of Tango pendant cylindrical and square luminaires 186mm.
Model. U95191-U95198 and U95211-U95218.

Product drawing (dimensions)

SUITABLE FOR WET LOCATIONS



MOUNTING DETAIL



Notice to installer :

- 1.WIRING INSTRUCTIONS** Warning : RISK OF FIRE AND ELECTRICAL SHOCK. : FIXTURE MUST BE INSTALLED BY A QUALIFIED ELECTRICIAN ONLY>FIXTURE IS INTENDED FOR INSTALLATION IN ACCORDANCE WITH THE NATIONAL ELECTRICAL CODE, LOCAL AND FEDERAL CODE SPECIFICATIONS. DISCONNECT POWER BEFORE SERVICING.
- 2.This fixture has a VOLTAGE SPECIFIC BALLAST,Check that the supply voltage is the same as the installed ballast voltage.**

Ligman Lighting USA

Tanasbourne Commerce Center
3302 Nw 211th Terrace
Hillsboro Oregon 97124
Tel : 503-645-0500, Fax : 503-645-8100

www.ligmanlightingusa.com

U 95191/21/01/12/REV.1
1/1



FM-TS-13/25-05-2007-REV.2

