



Tanasbourne Commerce Center
3302 Nw 211th Terrace
Hillsboro
Oregon
97124
Tel : 503-645-0500
Fax : 503-645-8100

Nikon 200mm PAR30 Halogen Installation

TOOLS REQUIRED

3mm Hex Key
Phillips Head medium screwdriver
Silicon Based waterproof sealer
11/32" Nut Driver



Notice to installer :

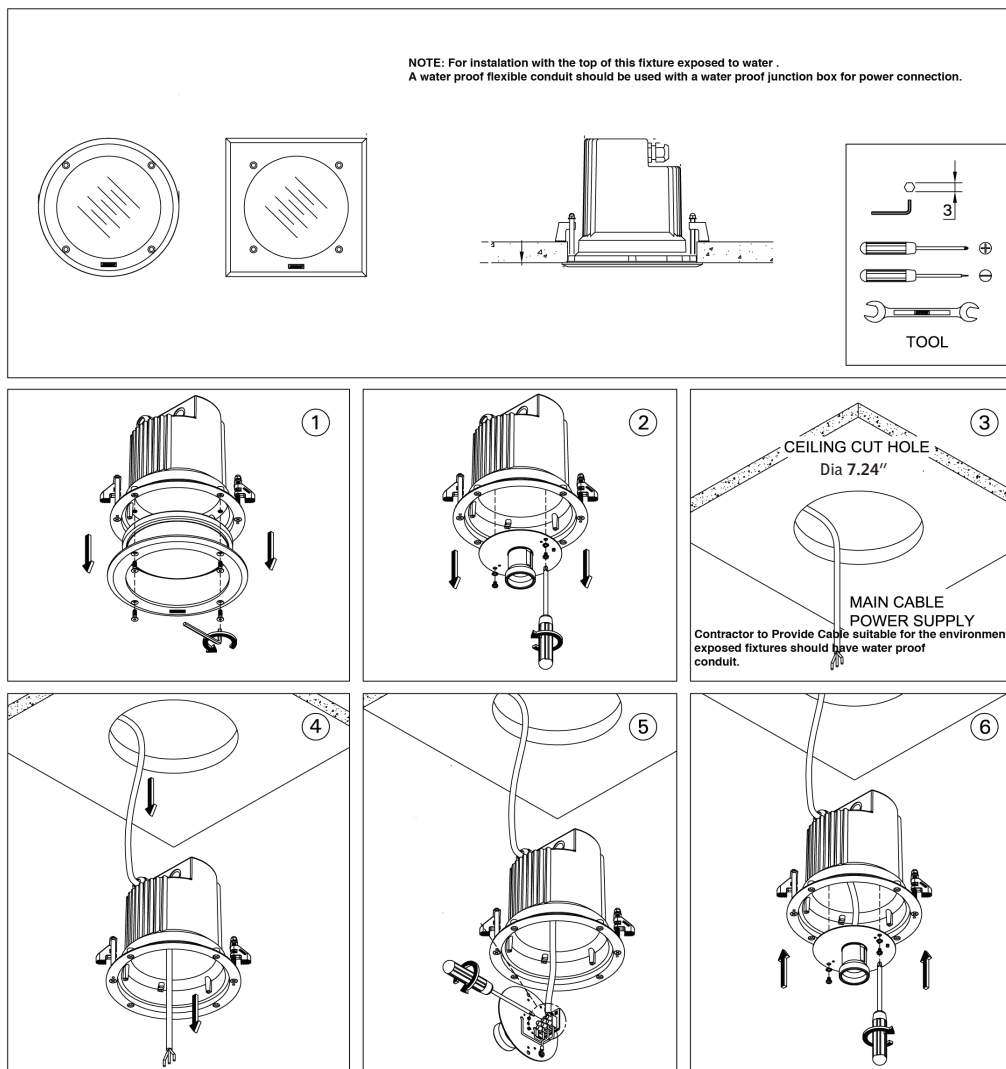
1. A level surface **MUST** be provided for proper installation.
2. A separate waterproof wiring box for power supply must be provided (by others).
3. Fixtures may be damaged if connected to a system that contains water.

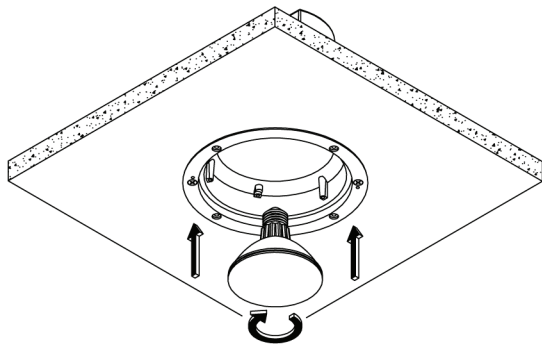
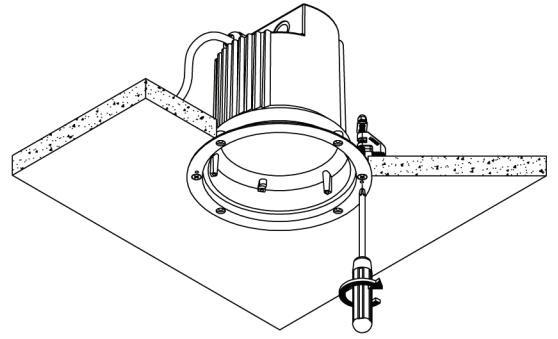
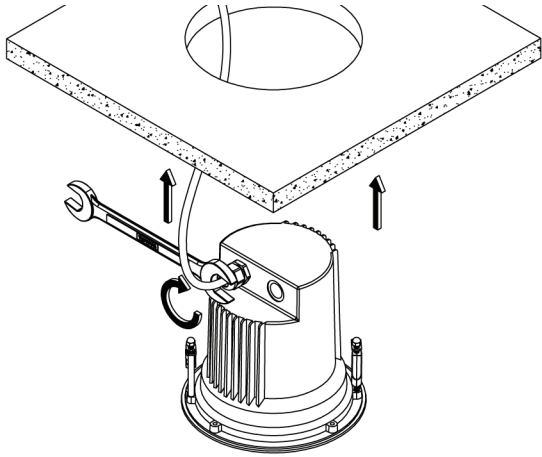
The National Electric Code requires that "conduits or raceways through which moisture may contact energized live parts shall be sealed or plugged at both ends".

4. WIRING INSTRUCTIONS Warning : RISK OF FIRE AND ELECTRICAL SHOCK. : FIXTURE MUST BE INSTALLED BY A QUALIFIED ELECTRICIAN ONLY > FIXTURE IS INTENDED FOR INSTALLATION IN ACCORDANCE WITH THE NATIONAL ELECTRICAL CODE, LOCAL AND FEDERAL CODE SPECIFICATIONS. DISCONNECT POWER BEFORE SERVICING.

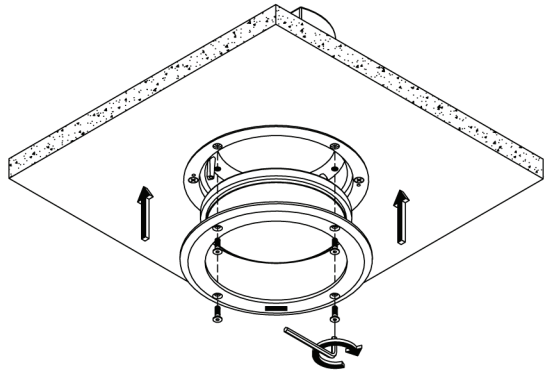
5. This fixture has a VOLTAGE SPECIFIC BALLAST, Check that the supply voltage is the same as the installed ballast voltage.

NOTE : IF THE BACK OF THIS FIXTURE IS EXPOSED TO THE OPEN ENVIRONMENT, A WATER PROOF JUNCTION BOX AND 1/2" WATER PROOF CONDUIT SHOULD BE USED. (1/2" CONDUIT AND JUNCTION BOX ARE SUPPLIED BY CONTRACTOR)





9



1