

#### Luminaire

Code UNE-60833-W30

Name Nevada 1 Inground uplight round dia 75 mm. LED

#### Measurement

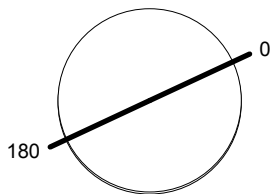
Code LIGMAN

Name Nevada 1 Inground uplight round dia 75 mm. LED

Luminaire Flux	143.31 lm	Luminaire Power	3.60 W	Efficacy	39.81 lm/W	Efficiency	100.00%
Lamps Flux	143.31 lm	Maximum value	667.00 cd	Position	C=0.00 G=180.00	CG	Rotosymmetrical
Round Luminaire		Diam.	45 mm	Height	1 mm		
Round Luminous Area		Diam.	45 mm	Height	0 mm		
Horizontal Luminous Area		0.001590 m2		Emitting area on Plane 180°		0.000000 m2	
Emitting area on Plane 0°		0.000000 m2		Emitting area on Plane 270°		0.000000 m2	
Emitting area on Plane 90°		0.000000 m2		Glare area at 76°		0.000385 m2	
Coordinate system		CG		Symmetry Type		Rotosymmetrical	
Date		10-04-2015		Maximum Gamma Angle		180	
Measurement Distance		0.00		Measurement Flux		143.31 lm	
Operator				Source voltage			
Temperature		25.00 °C		Source current			
Humidity		60.00 %		Photocell			
Notes							

Line		Code		Luminaire Lamps		Flux [lm]	Pow. [W]	Q.ty
		MR-8S-M1-1L-OS		Name		143.31	3.60	1
				1 LED 3000K - 3.60 W				
C.I.E.	0 0 0 0 100			D DIN 5040		--		
F UTE	1.00 T			B NBN		BZ 10		

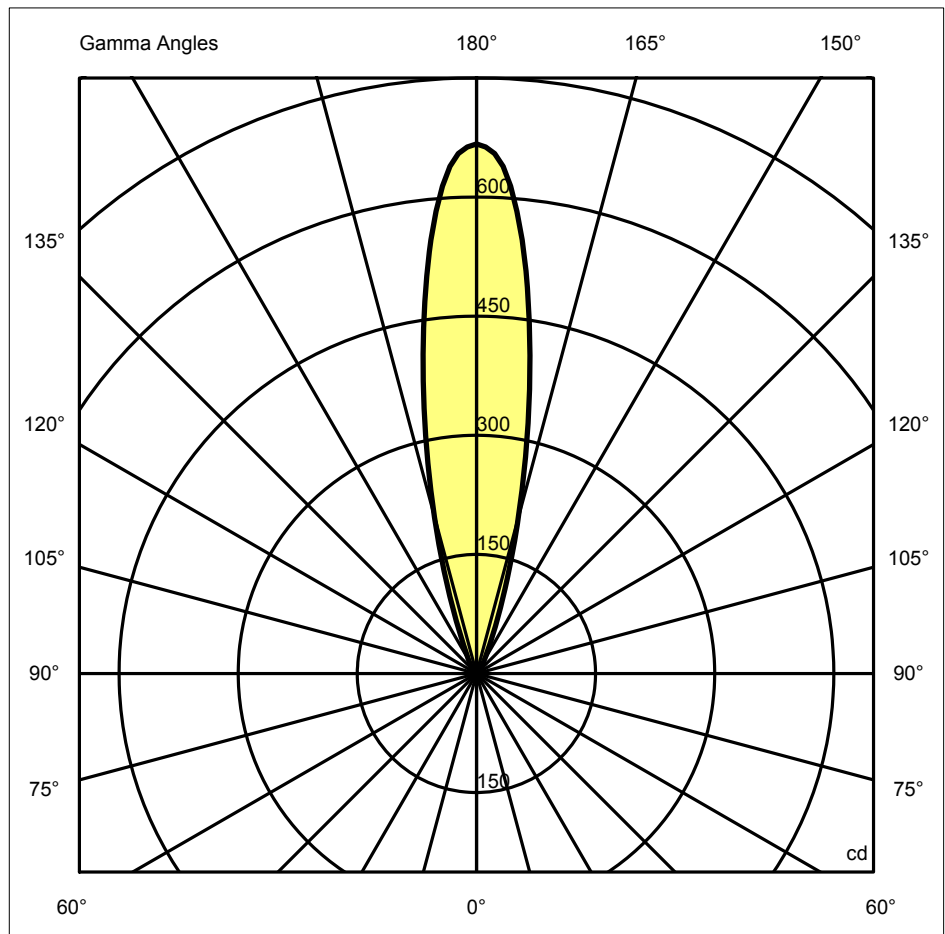
Diam=45mm



C Halfplanes

180.0 ——— 0.0

ULOR 99.99 %  
DLOR 0.01 %  
RN 99.99 %



#### Luminaire

Code UNE-60833-W30

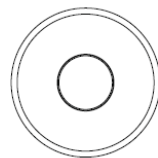
Name Nevada 1 Inground uplight round dia 75 mm. LED

#### Measurem.

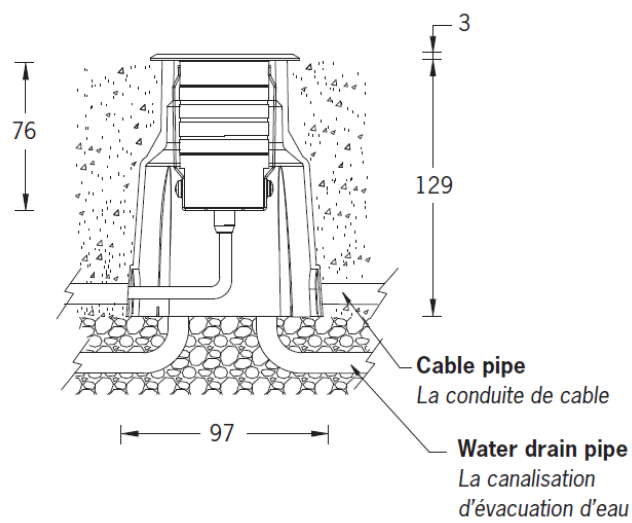
Code LIGMAN

Name Nevada 1 Inground uplight round dia 75 mm. LED

Luminaire Flux	143.31 lm	Luminaire Power	3.60 W	Efficacy	39.81 lm/W	Efficiency	100.00%
Lamps Flux	143.31 lm	Maximum value	667.00 cd	Position	C=0.00 G=180.00	CG	Rotosymmetrical



—  $\phi 75$  —



# Luminaire

Code UNE-60833-W30

Name Nevada 1 Inground uplight round dia 75 mm. LED

# Measurement

Code LIGMAN

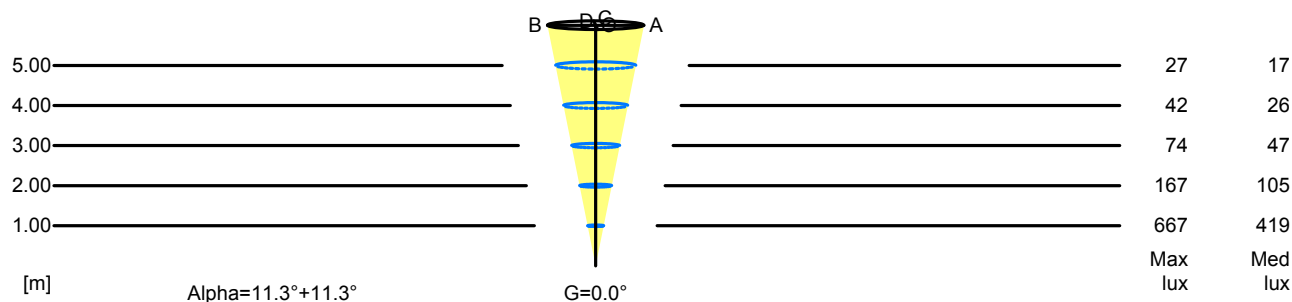
Name Nevada 1 Inground uplight round dia 75 mm. LED

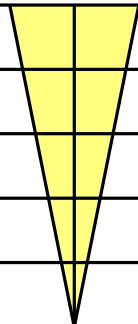

Luminaire Flux	143.31 lm	Luminaire Power	3.60 W	Efficacy	39.81 lm/W	Efficiency	100.00%
Lamps Flux	143.31 lm	Maximum value	667.00 cd	Position	C=0.00 G=180.00	CG	Rotosymmetrical

## Width at 50.00 % of Max Intensity

H[m]	1.00	2.00	3.00	4.00	5.00	H[m]	1.00	2.00	3.00	4.00	5.00
OA	0.20	0.40	0.60	0.80	1.00	OC	0.20	0.40	0.60	0.80	1.00
OB	0.20	0.40	0.60	0.80	1.00	OD	0.20	0.40	0.60	0.80	1.00

	Luminous Intensities [ cd ]									
	0	5	15	25	35	45	55	65	75	85
OA	667.00	584.30	203.10	36.80	12.60	6.10	3.00	1.50	0.50	0.10
OB	667.00	584.30	203.10	36.80	12.60	6.10	3.00	1.50	0.50	0.10
OC	667.00	584.30	203.10	36.80	12.60	6.10	3.00	1.50	0.50	0.10
OD	667.00	584.30	203.10	36.80	12.60	6.10	3.00	1.50	0.50	0.10



5.00	2.01	27	17	
4.00	1.60	42	26	
3.00	1.20	74	47	
2.00	0.80	167	105	
1.00	0.40	667	419	
H[m]	D[m]	Max lux	Med lux	Alpha=11.3°+11.3° G=0.0 

#### Luminaire

Code UNE-60833-W30

Name Nevada 1 Inground uplight round dia 75 mm. LED

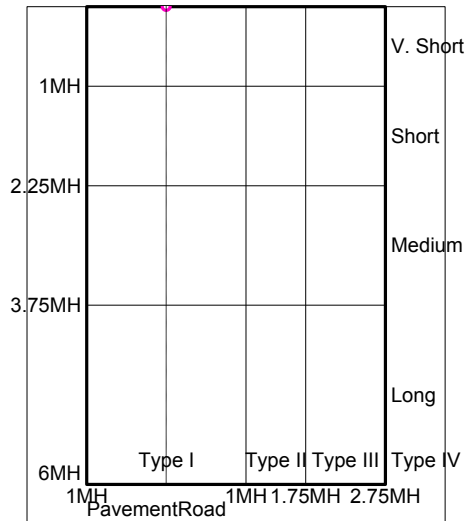
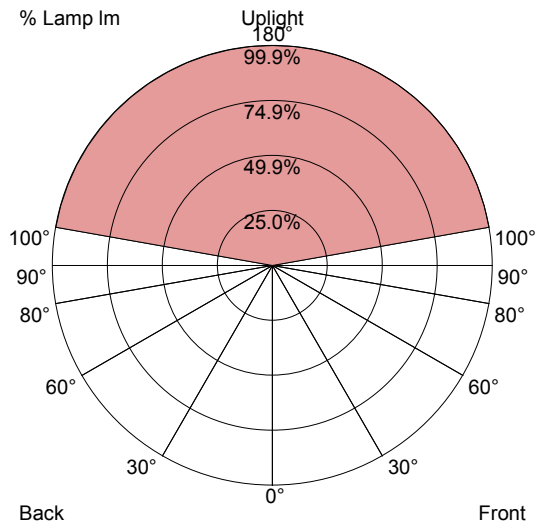
#### Measurement

Code LIGMAN

Name Nevada 1 Inground uplight round dia 75 mm. LED

Luminaire Flux	143.31 lm	Luminaire Power	3.60 W	Efficacy	39.81 lm/W	Efficiency	100.00%
Lamps Flux	143.31 lm	Maximum value	667.00 cd	Position	C=0.00 G=180.00	CG	Rotosymmetrical

#### US ROAD STANDARDS



Luminaire Classification System (LCS)				
LCS Zone		Lumens	%Lamp	%Lum
FL	0° -- 30°	0.0 lm	0.0 %	0.0 %
FM	30° -- 60°	0.0 lm	0.0 %	0.0 %
FH	60° -- 80°	0.0 lm	0.0 %	0.0 %
FVH	80° -- 90°	0.0 lm	0.0 %	0.0 %
BL	0° -- 30°	0.0 lm	0.0 %	0.0 %
BM	30° -- 60°	0.0 lm	0.0 %	0.0 %
BH	60° -- 80°	0.0 lm	0.0 %	0.0 %
BVH	80° -- 90°	0.0 lm	0.0 %	0.0 %
UL	90° -- 100°	0.2 lm	0.1 %	0.1 %
UH	100° -- 180°	143.1 lm	99.9 %	99.9 %
TOTALS		143.3 lm	100.0 %	100.0 %
BUG B0 U3 G0 Type V Very Short Quadrilateral Symmetry				