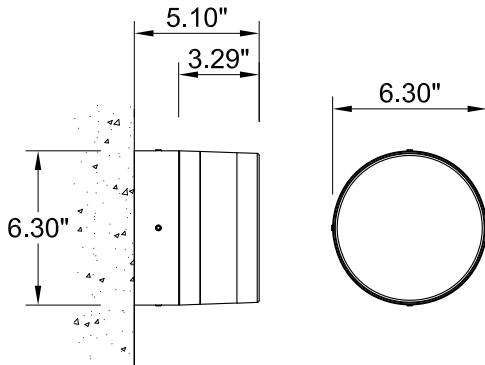


INSTALLATION AND SERVICE MANUAL

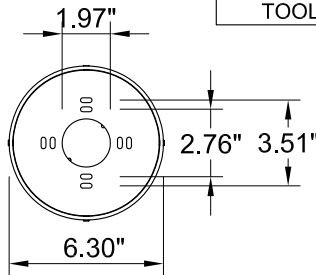
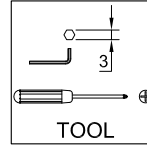


For installation of Lightwave wall light LED.
Model. ULW-30001.

Product drawing (dimensions)



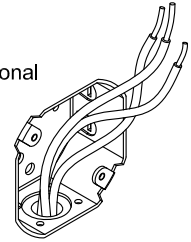
SUITABLE FOR WET LOCATIONS



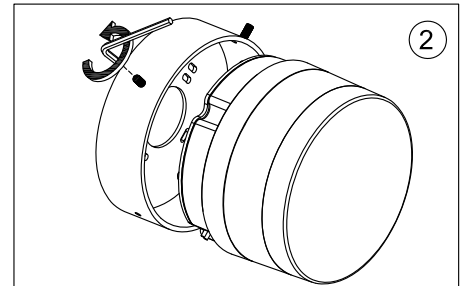
MOUNTING DETAIL

NOTE

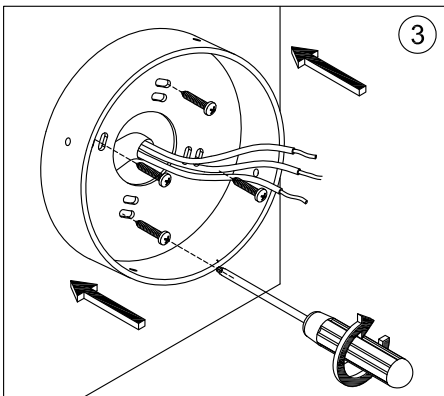
Mounts over
a 3" or 4" Octagonal
Junction box.



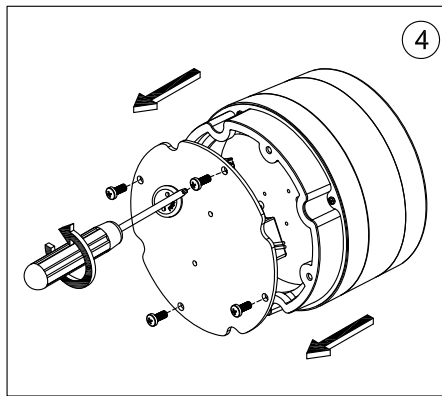
1



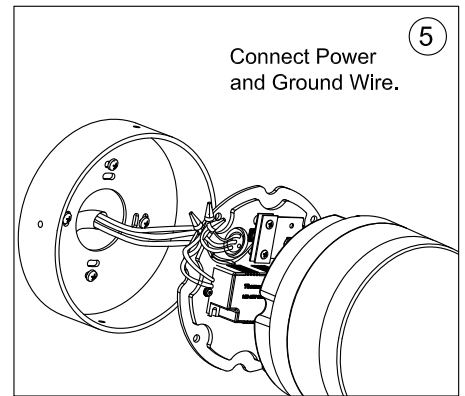
2



3

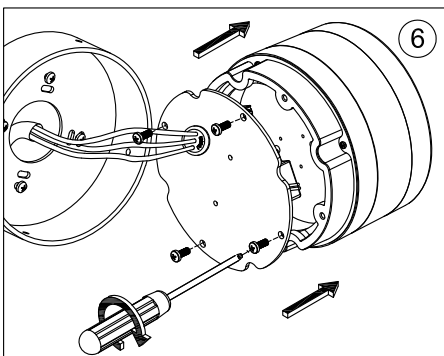


4

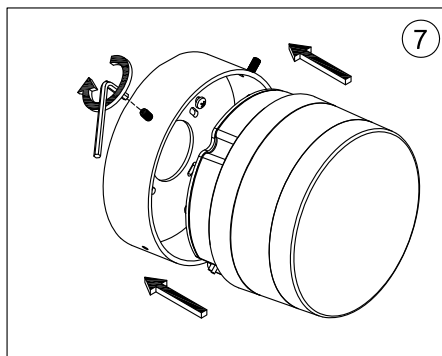


Connect Power
and Ground Wire.

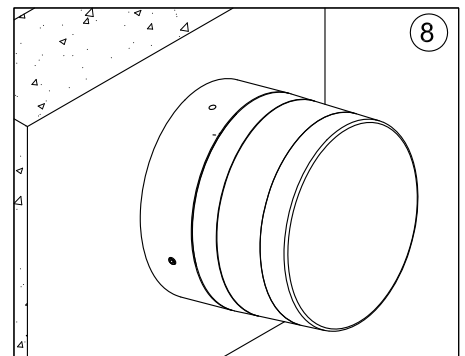
5



6



7



8

Notice to installer :

- 1.WIRING INSTRUCTIONS** Warning : RISK OF FIRE AND ELECTRICAL SHOCK. : FIXTURE MUST BE INSTALLED BY A QUALIFIED ELECTRICIAN ONLY>FIXTURE IS INTENDED FOR INSTALLATION IN ACCORDANCE WITH THE NATIONAL ELECTRICAL CODE, LOCAL AND FEDERAL CODE SPECIFICATIONS. DISCONNECT POWER BEFORE SERVICING.
- 2.This fixture has a VOLTAGE SPECIFIC BALLAST**,Check that the supply voltage is the same as the installed ballast voltage.

Ligman Lighting USA

7144 NW Progress Court, Hillsboro
Oregon, 97124, USA
Tel : 503 645 0500 | Fax : 503 645 8100

www.ligmanlightingusa.com

ULW-30001 04/09/15/REV.0
1/1

ISO 9001
ISO 14001
BUREAU VERITAS
Certification



FM-TS-13/25-05-2007-REV.2