

Luminaire

Code UVK-30001-M-W40
Name Vektor Medium wall washer 12 LED

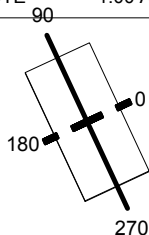
Measurem.

Code LIGMAN
Name Vektor Medium wall washer 12 LED

| | | | | | | | |
|----------------------------|-------------|-----------------------------|--------------------|-----------------------------|---------------|-------------------|--------------------|
| Luminaire Flux | 1932.06 lm | Luminaire Power | 20.40 W | Efficacy | 94.71 lm/W | Efficiency | 100.00% |
| Lamps Flux | 1932.06 lm | Maximum value | 5103.50 cd | Position | C=0.00 G=0.00 | CG | Double Symmetrical |
| Rectangular Luminaire | Length | 200 mm | Width | 100 mm | Height | 1 mm | |
| Rectangular Luminous Area | Length | 200 mm | Width | 100 mm | Height | 0 mm | |
| Horizontal Luminous Area | 0.020000 m2 | Emitting area on Plane 180° | 0.000000 m2 | Emitting area on Plane 270° | 0.000000 m2 | Glare area at 76° | 0.004838 m2 |
| Emitting area on Plane 0° | 0.000000 m2 | | | | | | |
| Emitting area on Plane 90° | 0.000000 m2 | | | | | | |
| Coordinate system | CG | Symmetry Type | Double Symmetrical | | | | |
| Date | 30-06-2015 | Maximum Gamma Angle | 90 | | | | |
| Measurement Distance | 0.00 | Measurement Flux | 1932.06 lm | | | | |
| Operator | | Source voltage | | | | | |
| Temperature | 25.00 °C | Source current | | | | | |
| Humidity | 60.00 % | Photocell | | | | | |
| Notes | | | | | | | |

| Line | Code | Luminaire Lamps | Flux [lm] | Pow. [W] | Q.ty |
|------|-----------------|--------------------------------|-----------|----------|------|
| | UVK-30001-M-W40 | Name 12 LED 4000K - 20.40 W | 1932.06 | 20.40 | 1 |

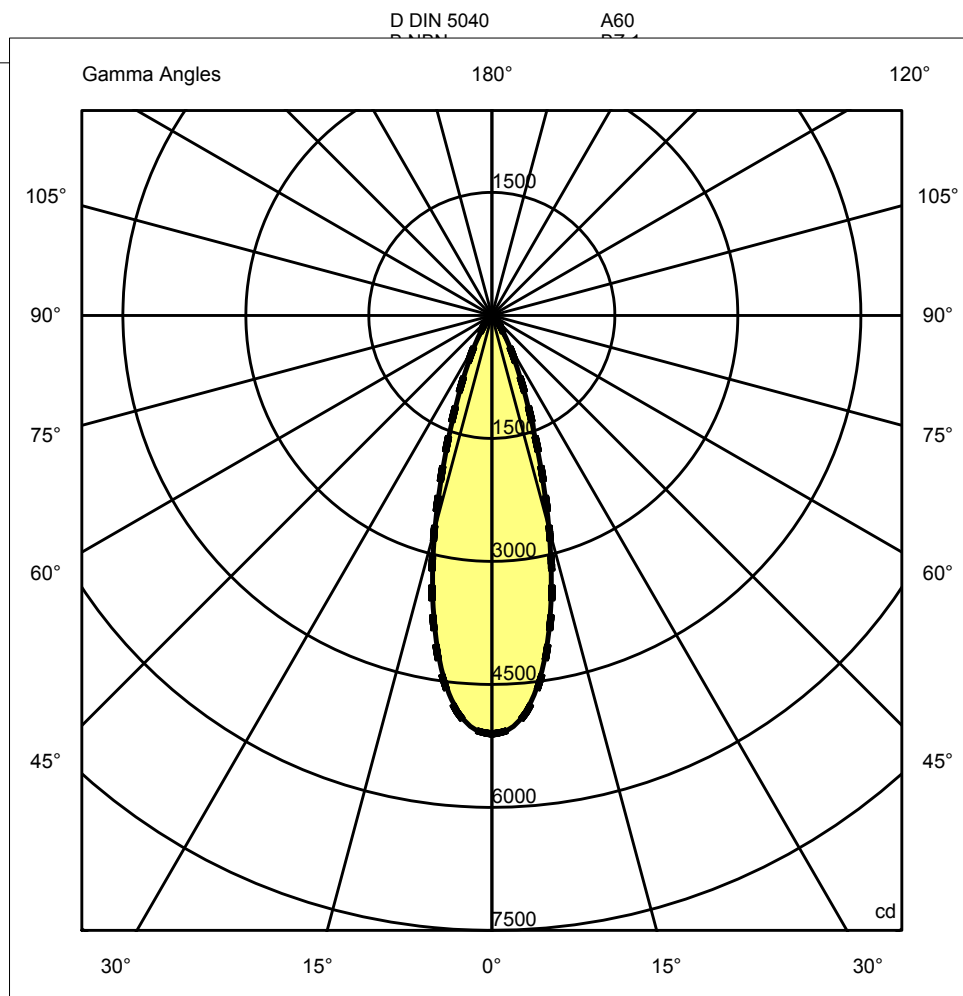
200mm x 100mm
C.I.E.
F UTE 90 97 99 100 100
1.00 A



C Halfplanes

180.0 ——— 0.0
270.0 ——— 90.0

ULOR 0.00 %
DLOR 100.00 %
RN 0.00 %



Luminaire

Code UVK-30001-M-W40

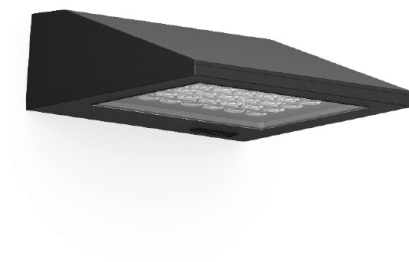
Name Vekter Medium wall washer 12 LED

Measurment.

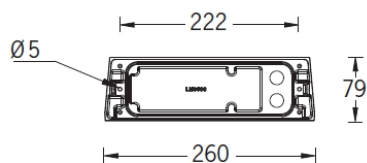
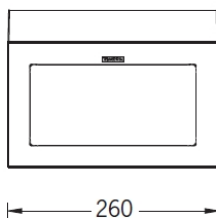
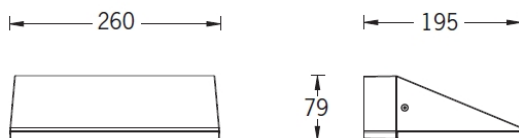
Code LIGMAN

Name Vekter Medium wall washer 12 LED

| | | | | | | | |
|----------------|------------|-----------------|------------|----------|---------------|------------|--------------------|
| Luminaire Flux | 1932.06 lm | Luminaire Power | 20.40 W | Efficacy | 94.71 lm/W | Efficiency | 100.00% |
| Lamps Flux | 1932.06 lm | Maximum value | 5103.50 cd | Position | C=0.00 G=0.00 | CG | Double Symmetrical |



VEKTER 1



Mounting detail
Instructions de montage

Luminaire

Code UVK-30001-M-W40

Name Vektor Medium wall washer 12 LED

Measurem.

Code LIGMAN

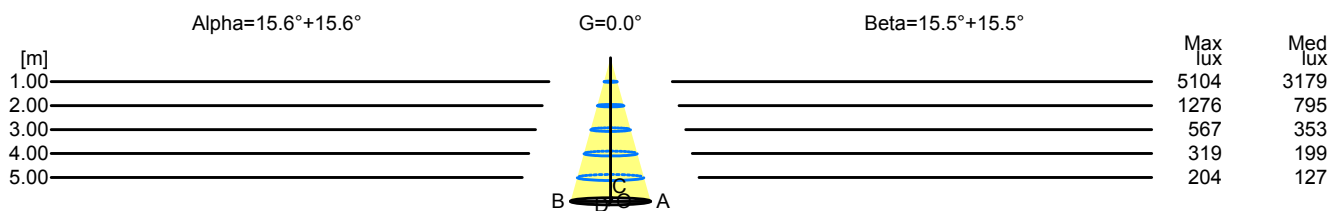
Name Vektor Medium wall washer 12 LED

| | | | | | | | |
|----------------|------------|-----------------|------------|----------|---------------|------------|--------------------|
| Luminaire Flux | 1932.06 lm | Luminaire Power | 20.40 W | Efficacy | 94.71 lm/W | Efficiency | 100.00% |
| Lamps Flux | 1932.06 lm | Maximum value | 5103.50 cd | Position | C=0.00 G=0.00 | CG | Double Symmetrical |

Width at 50.00 % of Max Intensity

| | | | | | | | | | | | |
|------|------|------|------|------|------|------|------|------|------|------|------|
| H[m] | 1.00 | 2.00 | 3.00 | 4.00 | 5.00 | H[m] | 1.00 | 2.00 | 3.00 | 4.00 | 5.00 |
| OA | 0.28 | 0.56 | 0.84 | 1.12 | 1.40 | OC | 0.28 | 0.55 | 0.83 | 1.11 | 1.38 |
| OB | 0.28 | 0.56 | 0.84 | 1.12 | 1.40 | OD | 0.28 | 0.55 | 0.83 | 1.11 | 1.38 |

| | | | | | | | | | | |
|----|-----------------------------|---------|---------|--------|--------|--------|-------|-------|-------|------|
| | Luminous Intensities [cd] | | | | | | | | | |
| | 0 | 5 | 15 | 25 | 35 | 45 | 55 | 65 | 75 | 85 |
| OA | 5103.50 | 4856.90 | 2711.60 | 795.20 | 231.60 | 101.20 | 63.50 | 41.20 | 18.70 | 2.40 |
| OB | 5103.50 | 4856.90 | 2711.60 | 795.20 | 231.60 | 101.20 | 63.50 | 41.20 | 18.70 | 2.40 |
| OC | 5103.50 | 4836.50 | 2681.90 | 779.40 | 225.90 | 99.50 | 62.10 | 40.00 | 16.30 | 1.30 |
| OD | 5103.50 | 4836.50 | 2681.90 | 779.40 | 225.90 | 99.50 | 62.10 | 40.00 | 16.30 | 1.30 |



| H[m] | D[m] | Max lux | Med lux | Alpha=15.6°+15.6° | G=0.0 |
|------|------|---------|---------|-------------------|-------|
| 1.00 | 0.56 | 5104 | 3179 | | |
| 2.00 | 1.12 | 1276 | 795 | | |
| 3.00 | 1.67 | 567 | 353 | | |
| 4.00 | 2.23 | 319 | 199 | | |
| 5.00 | 2.79 | 204 | 127 | | |

| H[m] | D[m] | Max lux | Med lux | Beta=15.5°+15.5° | G=0.0 |
|------|------|---------|---------|------------------|-------|
| 1.00 | 0.55 | 5104 | 3179 | | |
| 2.00 | 1.11 | 1276 | 795 | | |
| 3.00 | 1.66 | 567 | 353 | | |
| 4.00 | 2.22 | 319 | 199 | | |
| 5.00 | 2.77 | 204 | 127 | | |

Luminaire

Code UVK-30001-M-W40
Name Vekter Medium wall washer 12 LED

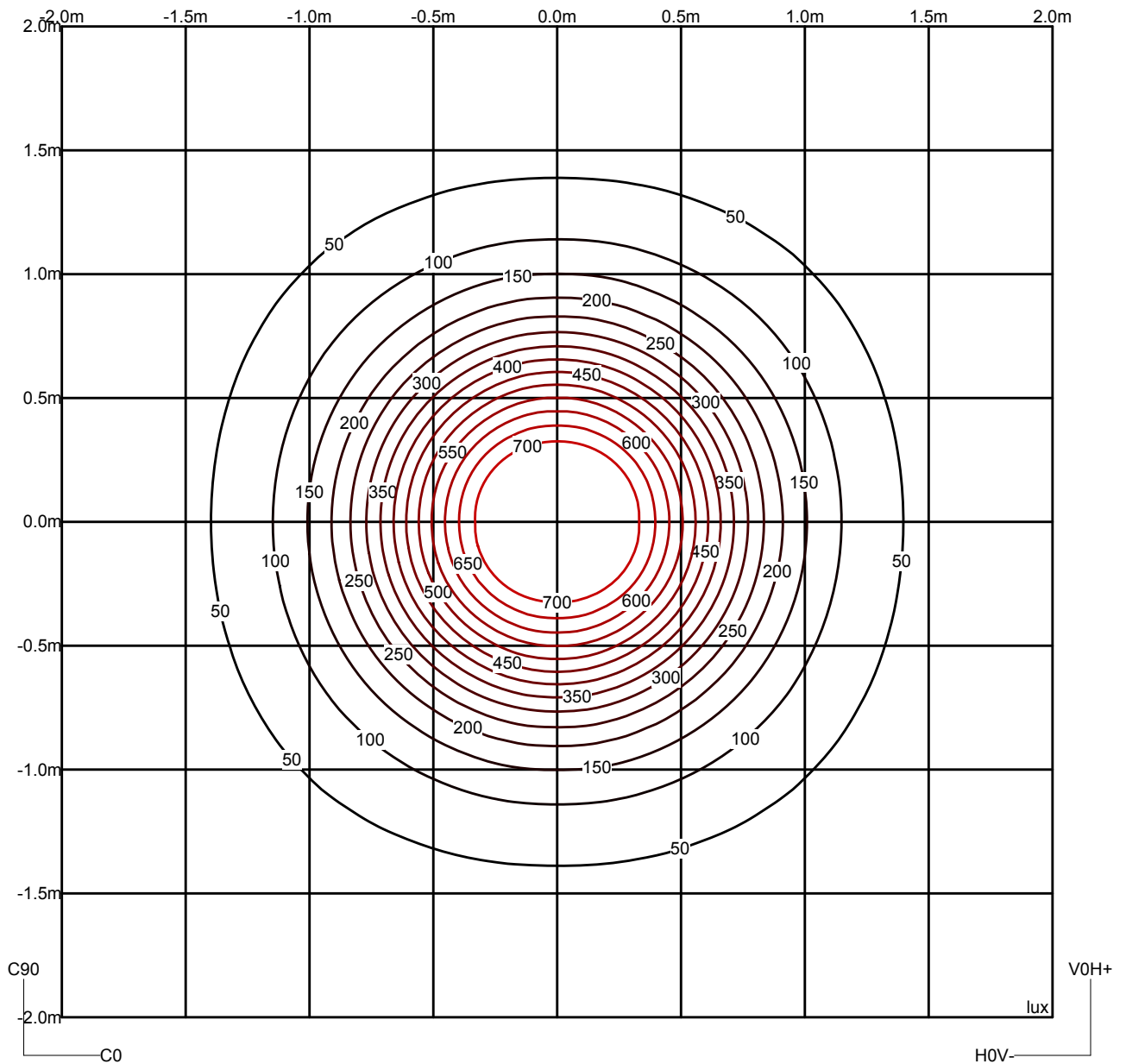
Measurem.

Code LIGMAN
Name Vekter Medium wall washer 12 LED

| | | | | | | | |
|----------------|------------|-----------------|------------|----------|---------------|------------|--------------------|
| Luminaire Flux | 1932.06 lm | Luminaire Power | 20.40 W | Efficacy | 94.71 lm/W | Efficiency | 100.00% |
| Lamps Flux | 1932.06 lm | Maximum value | 5103.50 cd | Position | C=0.00 G=0.00 | CG | Double Symmetrical |

Isolux (Floor)

Luminaire position X=0.00m Y=0.00m Z=2.50m



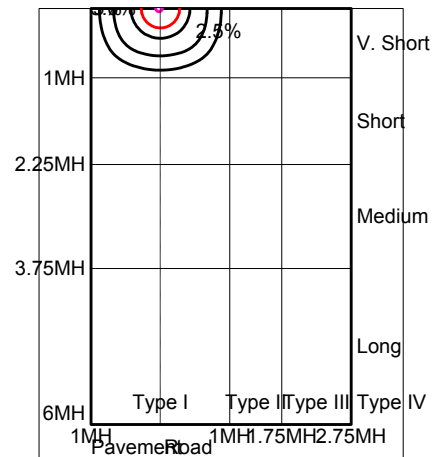
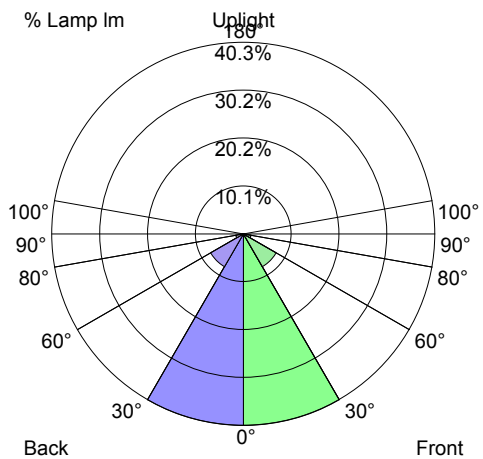
Code UVK-30001-M-W40

| | |
|------|----------------------------------|
| Name | Vekter Medium wall washer 12 LED |
|------|----------------------------------|

Measur.

Code LIGMAN

| | |
|------|----------------------------------|
| Code | LEGMAN |
| Name | Vekter Medium wall washer 12 LED |



| Luminaire Classification System (LCS) | | | | |
|---|--------------|-----------|---------|---------|
| LCS Zone | | Lumens | %Lamp | %Lum |
| FL | 0° -- 30° | 779.2 lm | 40.3 % | 40.3 % |
| FM | 30° -- 60° | 153.9 lm | 8.0 % | 8.0 % |
| FH | 60° -- 80° | 31.4 lm | 1.6 % | 1.6 % |
| FVH | 80° -- 90° | 1.6 lm | 0.1 % | 0.1 % |
| BL | 0° -- 30° | 779.2 lm | 40.3 % | 40.3 % |
| BM | 30° -- 60° | 153.9 lm | 8.0 % | 8.0 % |
| BH | 60° -- 80° | 31.4 lm | 1.6 % | 1.6 % |
| BVH | 80° -- 90° | 1.6 lm | 0.1 % | 0.1 % |
| UL | 90° -- 100° | 0.0 lm | 0.0 % | 0.0 % |
| UH | 100° -- 180° | 0.0 lm | 0.0 % | 0.0 % |
| TOTALS | | 1932.1 lm | 100.0 % | 100.0 % |
| BUG B2 U0 G0 Type V Very Short Quadrilateral Symmetry | | | | |