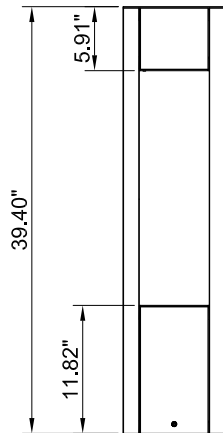
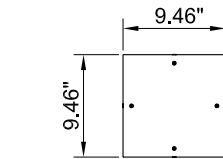
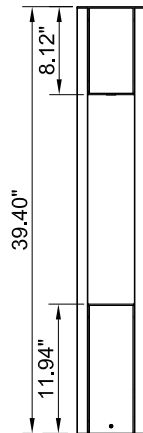
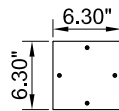


For installation of Vancouver Bollard 9.46"x9.46" and 6.3"x6.3"
Model. UVA-10001 and UVA-10011

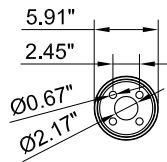
Product drawing (dimensions) SUITABLE FOR WET LOCATIONS



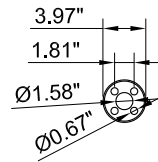
UVA-10001



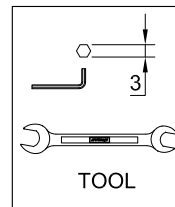
UVA-10011



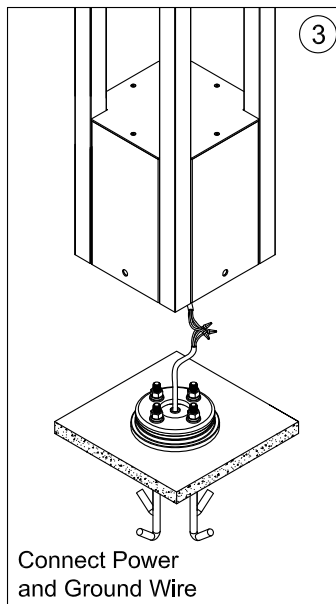
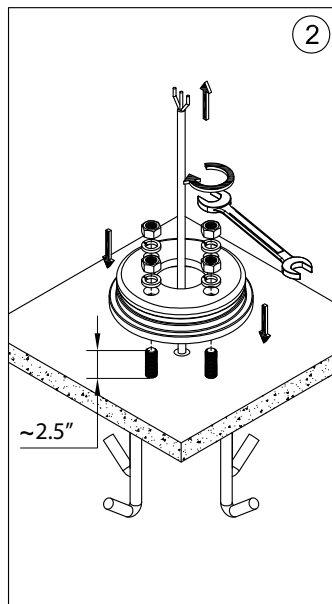
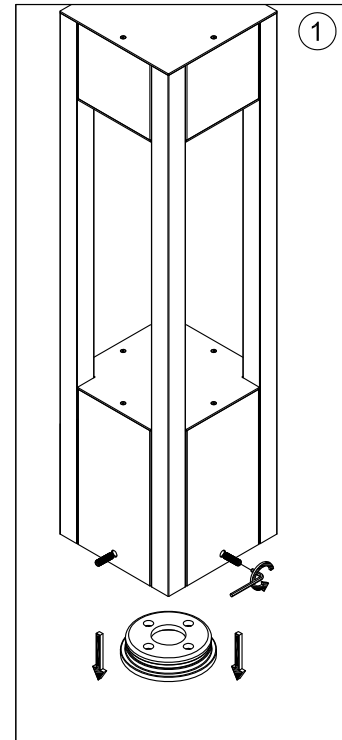
MOUNTING DETAIL



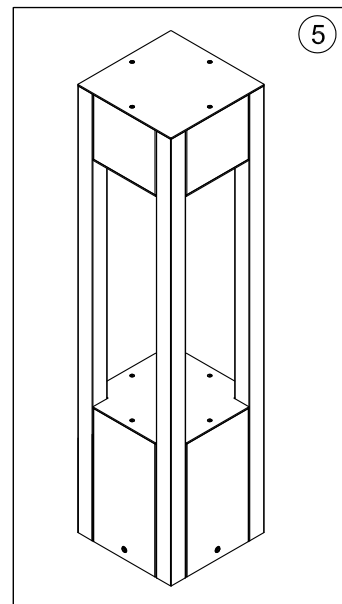
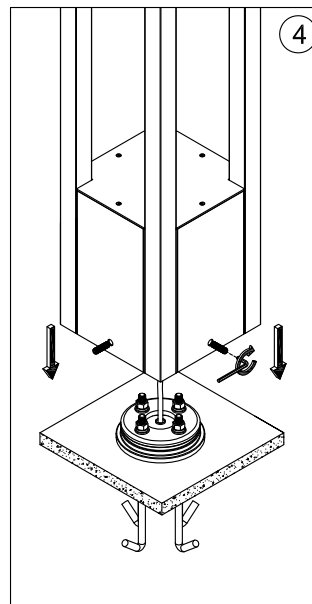
MOUNTING DETAIL



TOOL



Connect Power
and Ground Wire



Notice to installer :

- 1. WIRING INSTRUCTIONS** Warning : RISK OF FIRE AND ELECTRICAL SHOCK. : FIXTURE MUST BE INSTALLED BY A QUALIFIED ELECTRICIAN ONLY>FIXTURE IS INTENDED FOR INSTALLATION IN ACCORDANCE WITH THE NATIONAL ELECTRICAL CODE, LOCAL AND FEDERAL CODE SPECIFICATIONS. DISCONNECT POWER BEFORE SERVICING.
- 2. This fixture has a VOLTAGE SPECIFIC BALLAST, Check that the supply voltage is the same as the installed ballast voltage.**

Ligman Lighting USA

7144 NW Progress Court, Hillsboro
Oregon, 97124, USA
Tel : 503 645 0500 | Fax : 503 645 8100

www.ligmanlightingusa.com

UVA-10001/15/03/17 REV.1/PUT
1/1



FM-TS-13/25-05-2007-REV.2