

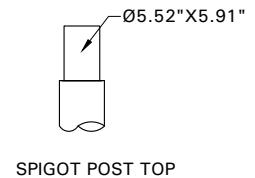
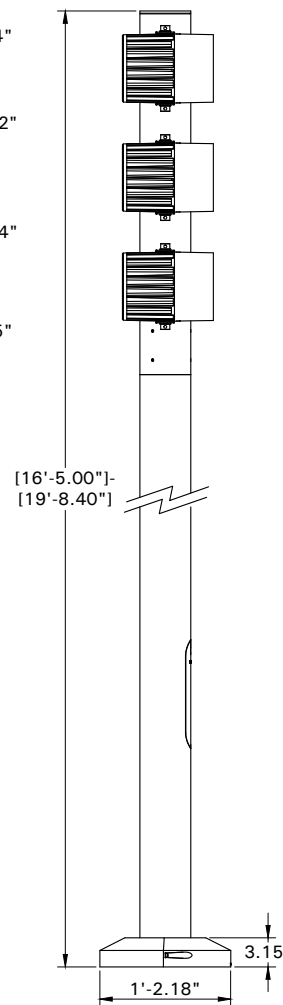
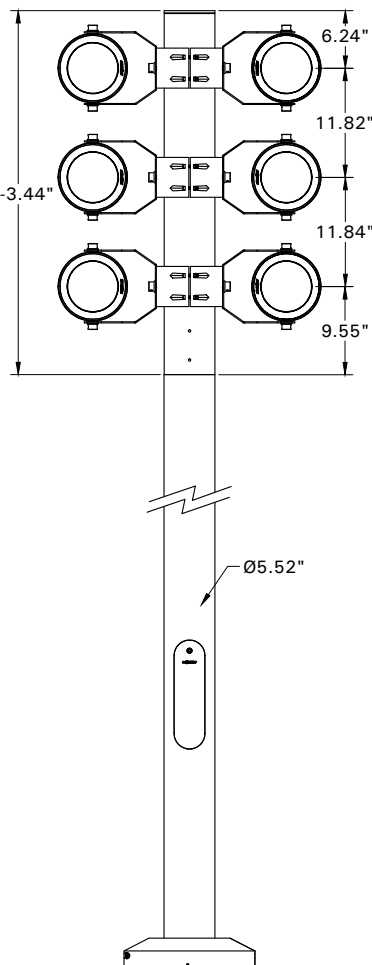
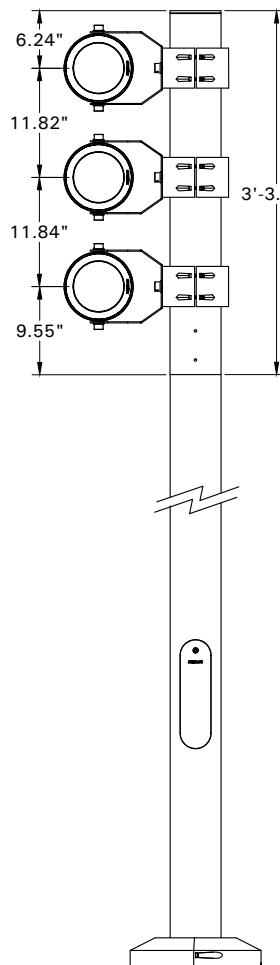
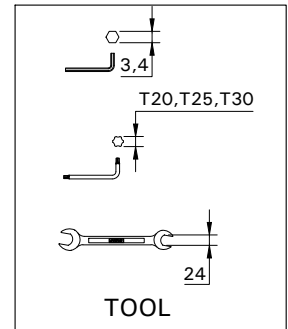
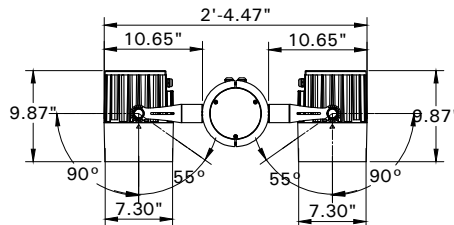
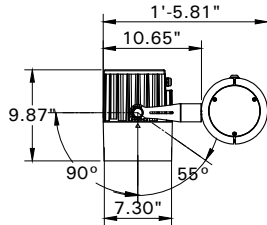
INSTALLATION AND SERVICE MANUAL

For Installation of Odessa 19 Cluster column projectors.

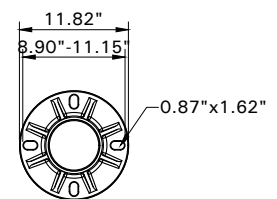
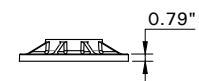
Model. UOD-21041, UOD-21042, UOD-21043 UOD-21044, UOD-21045, UOD-21046, UOD-21047 and UOD-21048

Product drawing (dimensions)

IP66 IK08 CLASS I 



SPIGOT POST TOP



Mounting detail

UOD-21041, UOD-21043
UOD-21045, UOD-21047

UOD-21042, UOD-21044
UOD-21046, UOD-21048

- LIGMAN standard products are supplied with the control gear 24Vdc.
The control gear for other voltages and frequencies is available upon request, please consult us for more details.
 - LIGMAN luminaires are designed to conform IEC 60598 2-18 standard.
- Technical amendments and modifications techniques reserved.

Ligman Lighting USA

7144 NE Progress Court, Hillsboro
Oregon, 97124, USA
Tel : 503 645 0500 | Fax : 503 645 8100

