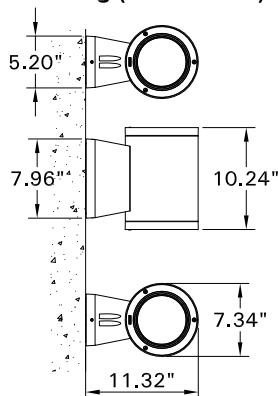
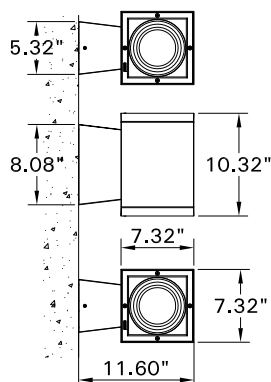


For installation of Tango 2,12 cylindrical and square Wall up-down light.
Model. U30384,U30386,U30387,U30734,U30736 and U30737.

Product drawing (dimensions)

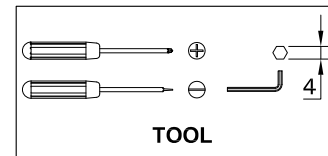


U30384, U30386, U30387

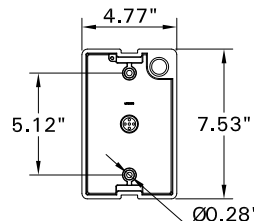


U30734, U30736, U30737

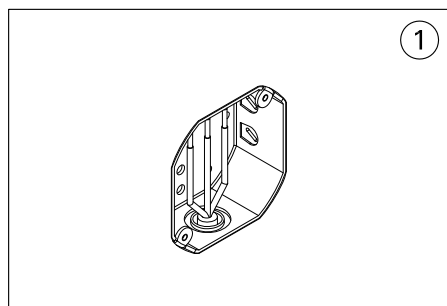
SUITABLE FOR WET LOCATIONS



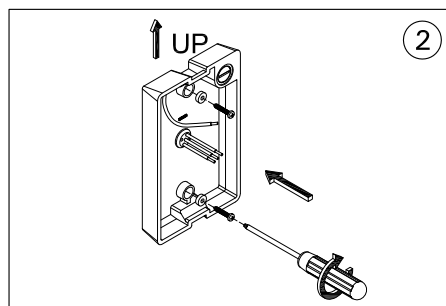
TOOL



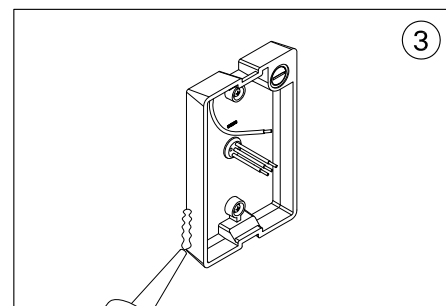
MOUNTING DETAIL



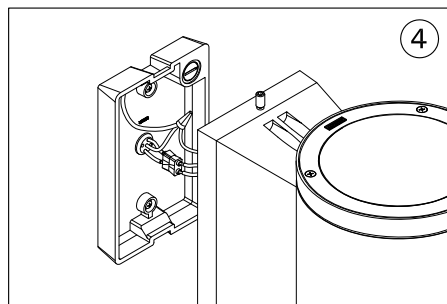
Install 4" Octagonal Junction Box by others.



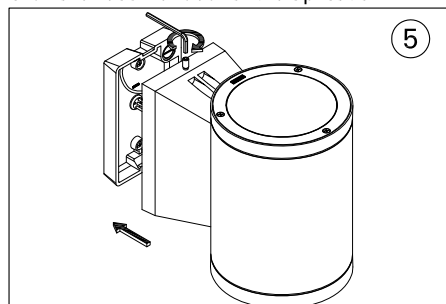
Center the back plate over the Junction Box and Secure the back plate to the wall, using mounting hardware recommended for the application.



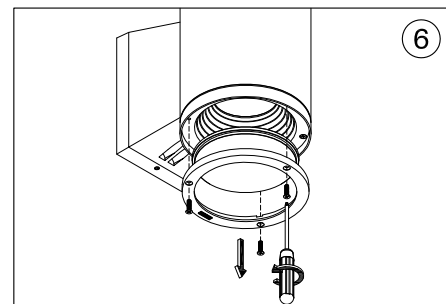
Ensure watertight seal using UL approved silicone based sealant.



Connect Power and Ground Wire using Quick connect provided.



Install Body and Tighten the Qty 2x4mm Allen head Set Screws.



Notice to installer :

1.Mounts directly to the wall over a recessed 4" Octagonal Junction box.

2.Wall Applications only.

3.In conformance with UL Standards 1598 a silicone based sealant MUST be used between the luminaire and the wall to ensure a watertight seal.

4.WIRING INSTRUCTIONS Warning : RISK OF FIRE AND ELECTRICAL SHOCK. : FIXTURE MUST BE INSTALLED BY A QUALIFIED ELECTRICIAN ONLY>FIXTURE IS INTENDED FOR INSTALLATION IN ACCORDANCE WITH THE NATIONAL ELECTRICAL CODE, LOCAL AND FEDERAL CODE SPECIFICATIONS. DISCONNECT POWER BEFORE SERVICING.

5.This fixture has a VOLTAGE SPECIFIC BALLAST,Check that the supply voltage is the same as the Installed ballast voltage.

Ligman Lighting USA

Tanasbourne Commerce Center
3302 Nw 211th Terrace
Hillsboro Oregon 97124
Tel : 503-645-0500, Fax : 503-645-8100



