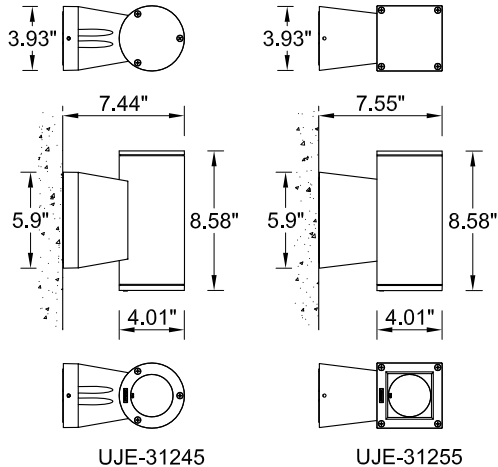


INSTALLATION AND SERVICE MANUAL

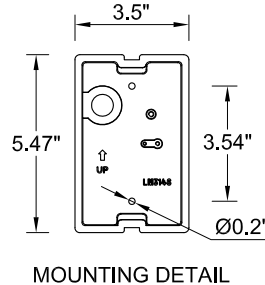
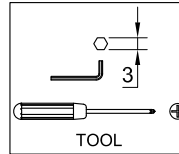


For installation of Jet cylindrical and square wall down light LEDs.
Model. UJE-31245, UJE-31255.

Product drawing (dimensions)

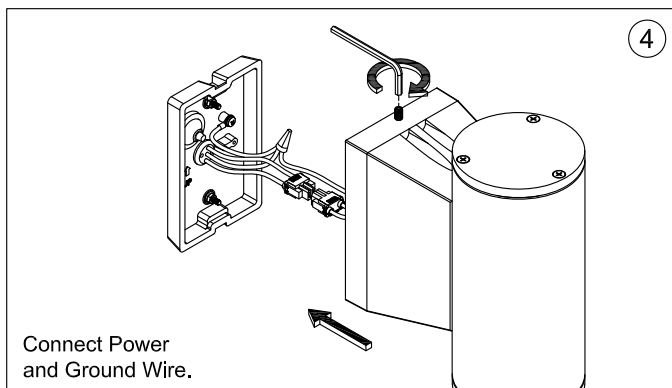
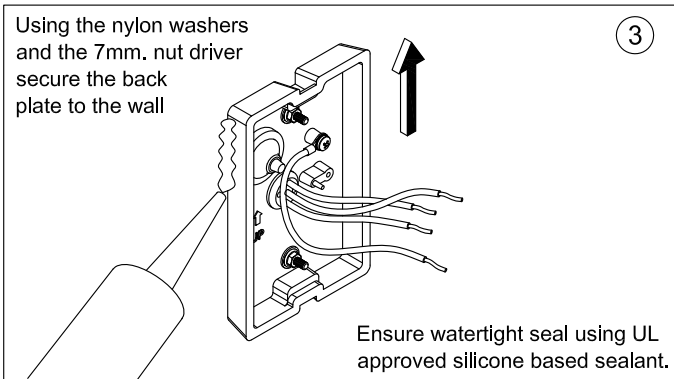
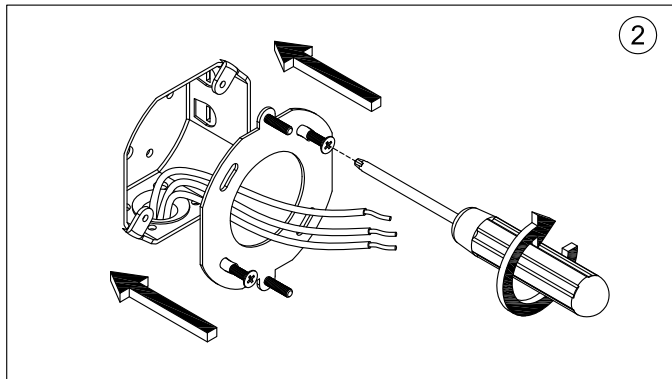
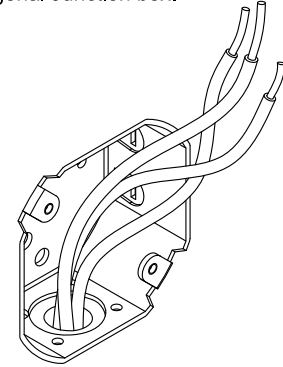


SUITABLE FOR WET LOCATIONS

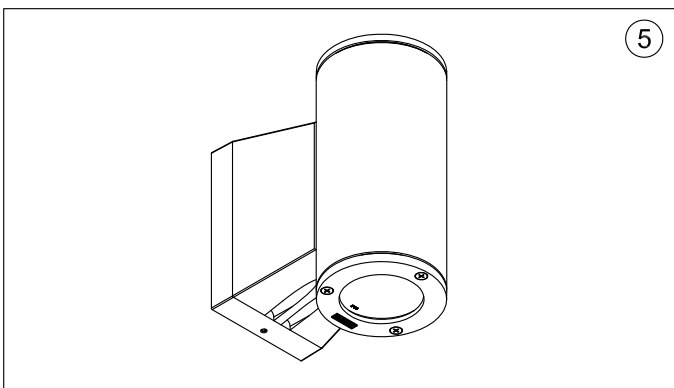


NOTE

Mounts over a 3"
Octagonal Junction box.



Connect Power
and Ground Wire.



Notice to installer :

- 1.WIRING INSTRUCTIONS Warning : RISK OF FIRE AND ELECTRICAL SHOCK. : FIXTURE MUST BE INSTALLED BY A QUALIFIED ELECTRICIAN ONLY>FIXTURE IS INTENDED FOR INSTALLATION IN ACCORDANCE WITH THE NATIONAL ELECTRICAL CODE, LOCAL AND FEDERAL CODE SPECIFICATIONS. DISCONNECT POWER BEFORE SERVICING.**
- 2.This fixture has a VOLTAGE SPECIFIC BALLAST,Check that the supply voltage is the same as the installed ballast voltage.**

Ligman Lighting USA

7144 NW Progress Court, Hillsboro
Oregon, 97124, USA
Tel : 503 645 0500 | Fax : 503 645 8100

www.ligmanlightingusa.com

UJE-31245/04/07/14/REV.0
1/1



FM-TS-13/25-05-2007-REV.2