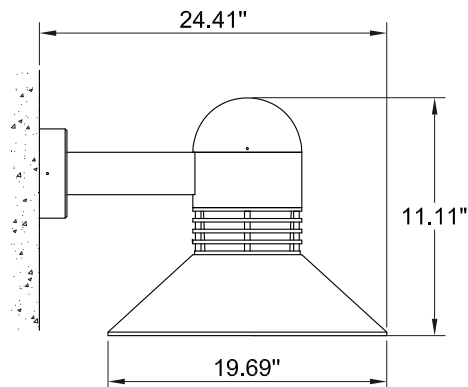


INSTALLATION AND SERVICE MANUAL

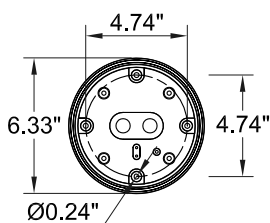
LIGMAN
LIGHTING USA

For installation of Duomo medium shade wall light COB.
Model. UDU-30136.

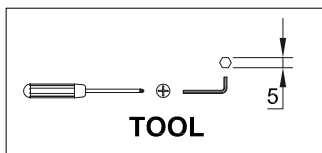
Product drawing (dimensions)



SUITABLE FOR WET LOCATIONS

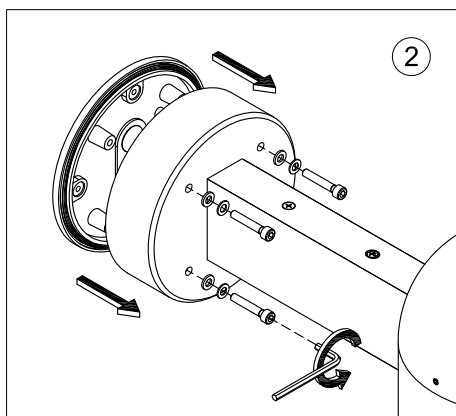
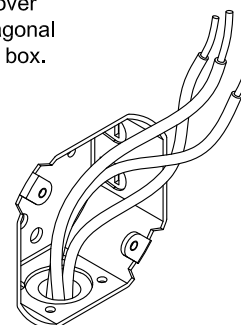


MOUNTING DETAIL

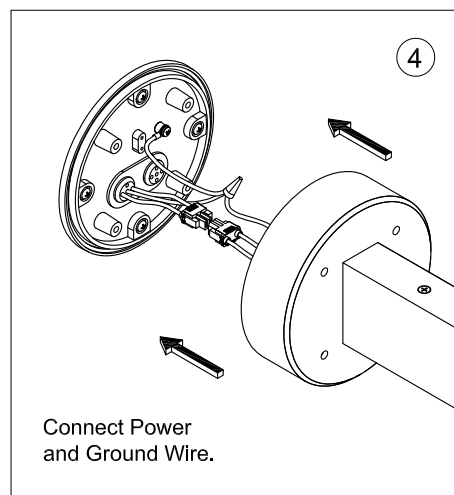
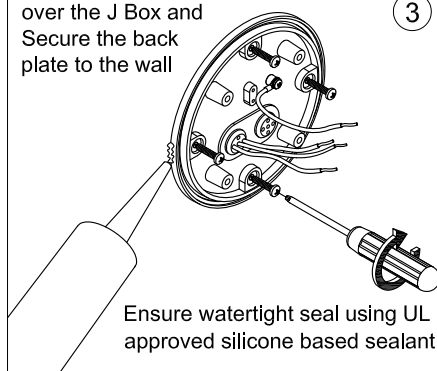


NOTE

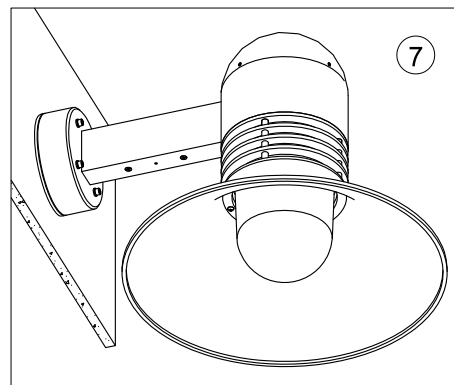
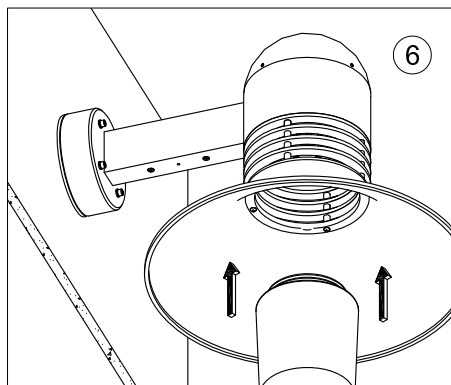
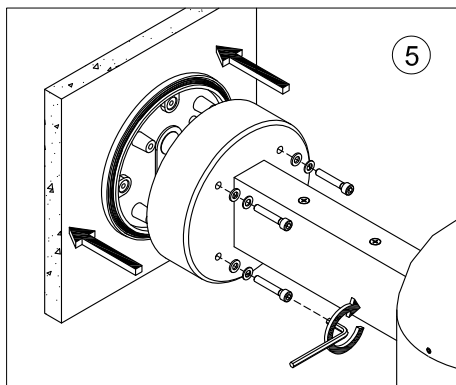
Mounts over
a 3" Octagonal
Junction box.



Position the Back Plate
over the J Box and
Secure the back
plate to the wall



Connect Power
and Ground Wire.



Notice to installer :

1.WIRING INSTRUCTIONS Warning : RISK OF FIRE AND ELECTRICAL SHOCK. : FIXTURE MUST BE INSTALLED BY A QUALIFIED ELECTRICIAN ONLY>FIXTURE IS INTENDED FOR INSTALLATION IN ACCORDANCE WITH THE NATIONAL ELECTRICAL CODE, LOCAL AND FEDERAL CODE SPECIFICATIONS. DISCONNECT POWER BEFORE SERVICING.

2.This fixture has a VOLTAGE SPECIFIC BALLAST,Check that the supply voltage is the same as the installed ballast voltage.

Ligman Lighting USA

7144 NW Progress Court, Hillsboro
Oregon, 97124, USA
Tel : 503 645 0500 | Fax : 503 645 8100
www.ligmanlightingusa.com

UDU-30136 08/09/17/REV.2 1/1 KIE



FM-TS-13/25-05-2007-REV.2