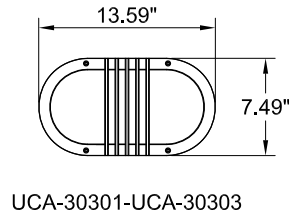


For installation of Capsule surface mounted luminaires.

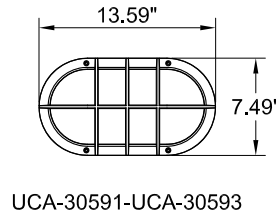
Model. UCA-30301-303, UCA-30311-313, UCA-30321-323, UCA-30591-593, UCA-30601-603.

## Product drawing (dimensions)

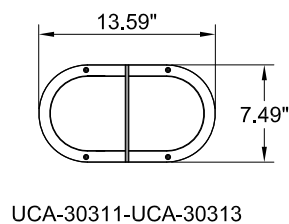
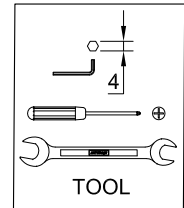
## SUITABLE FOR WET LOCATIONS



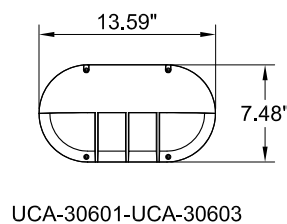
UCA-30301-UCA-30303



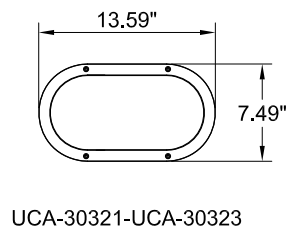
UCA-30591-UCA-30593



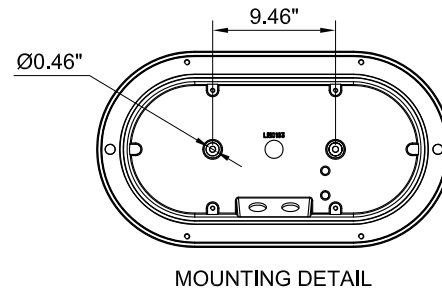
UCA-30311-UCA-30313



UCA-30601-UCA-30603



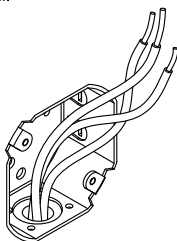
UCA-30321-UCA-30323



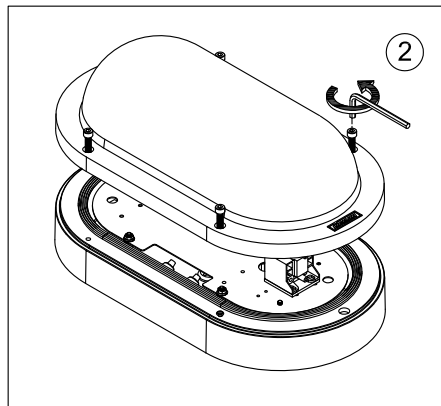
MOUNTING DETAIL

### NOTE

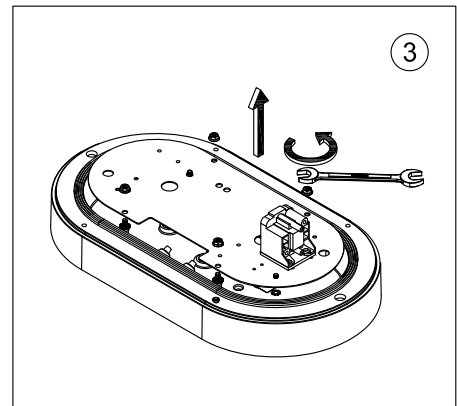
Mounts over a 3" Octagonal Junction box.



1



2



3

### Notice to installer :

1. **WIRING INSTRUCTIONS** Warning : RISK OF FIRE AND ELECTRICAL SHOCK. : FIXTURE MUST BE INSTALLED BY A QUALIFIED ELECTRICIAN ONLY>FIXTURE IS INTENDED FOR INSTALLATION IN ACCORDANCE WITH THE NATIONAL ELECTRICAL CODE, LOCAL AND FEDERAL CODE SPECIFICATIONS. DISCONNECT POWER BEFORE SERVICING.
2. This fixture has a **VOLTAGE SPECIFIC BALLAST**, Check that the supply voltage is the same as the installed ballast voltage.

Ligman Lighting USA

7144 NW Progress Court, Hillsboro  
Oregon, 97124, USA  
Tel : 503 645 0500 | Fax : 503 645 8100

www.ligmanlightingusa.com

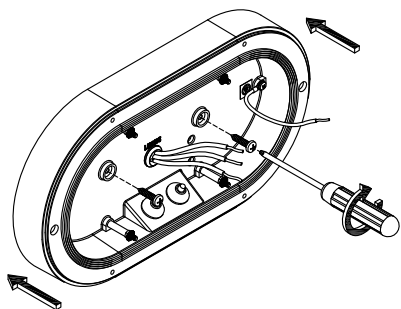
UCA-30301/12/06/14/REV.2  
1/2



FM-TS-13/25-05-2007-REV.2

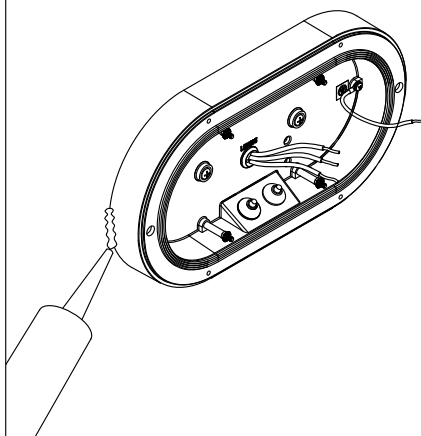
Position the body over the J Box and Secure the body housing to the wall

4



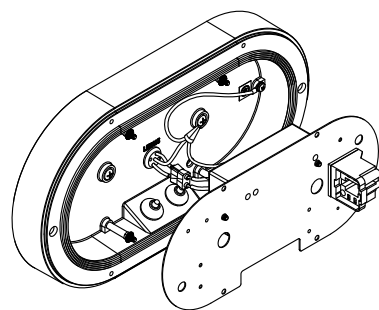
Ensure watertight seal using UL approved silicone based sealant.

5



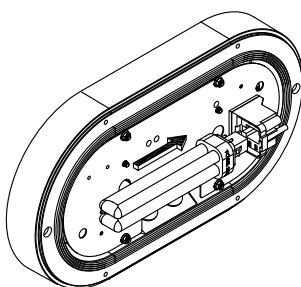
Connect Power and Ground Wire.

6

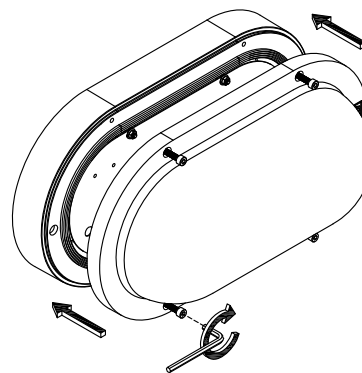


Install the Lamps

8



9



10

