



# Qba post top luminaire

IP54 ✱ ⚠ /EN 60598/CLASS I ⚡ /V/CE /IK07



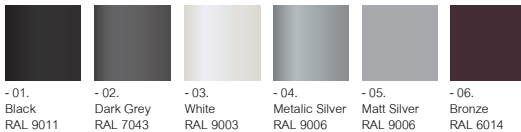
## Suitable for wet locations

An economic modern design post top luminaire with a low glare. It has a prismatic acrylic diffuser which provides high luminous performance and attractive visual comfort with a good downward symmetrical light distribution using high performance COB LED light engine. Designed for lighting of entrances, footpaths and car parks. The LED luminaires have features such as long life, limited maintenance and constant lifetime performance.

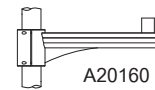
Low copper content die-cast aluminium housing with high corrosion resistance. Stainless steel screws. Durable silicone rubber gasket and clear prismatic high impact resistant UV stabilized acrylic diffuser. Housing is treated with a chemical chromatized protection before powder coating, ensuring high corrosion resistance. White painted internal reflector give light illumination downward.



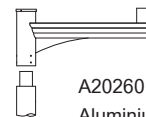
## Accessories



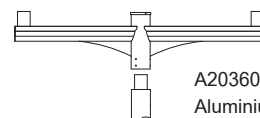
## Product Family



A20160  
Aluminium arm pole clamp



A20260  
Aluminium single arm post top

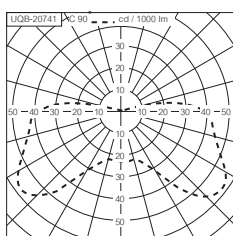
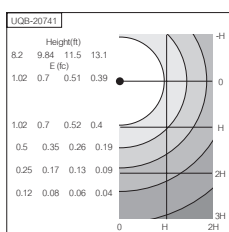
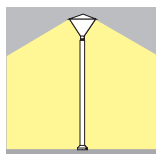


A20360  
Aluminium double arm post top

See page 648



UQB-20741

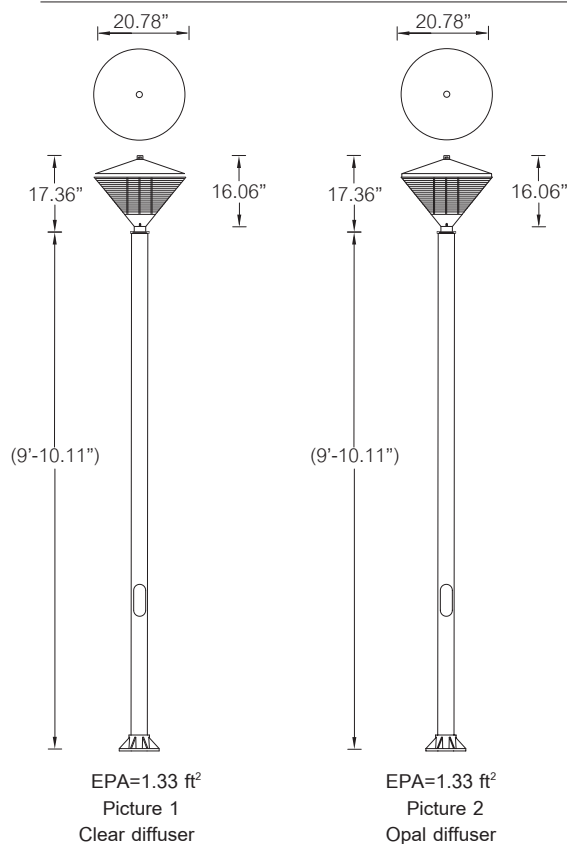


## Qba post top luminaire

Model No.	Lamp	Holder	Lumen	Weight	Picture
UQB-20741	CFQ 26w./CFTR 32/42w.	Gx24q-3/4	1550/2040/2720	37.0 lb.	1
UQB-20742	PMH-ED17 50w.	MED	2100	40.3 lb.	1
UQB-20743	PMH-ED17 70w.	MED	4000	40.3 lb.	1
UQB-20744	PMH-ED17 100w.	MED	6500	40.5 lb.	1
UQB-20745	PMH-ED17 150w.	MED	10000	41.8 lb.	1
UQB-20746	HPS-ED17 50w.	MED	3600	40.3 lb.	1
UQB-20747	HPS-ED17 70w.	MED	5450	40.3 lb.	1
UQB-20748	HPS-ED17 100w.	MED	8550	41.0 lb.	1
UQB-20749	HPS-ED17 150w.	MED	14400	42.3 lb.	1
UQB-20751	CFQ 26w./CFTR 32/42w.	Gx24q-3/4	1550/2040/2720	37.0 lb.	2
UQB-20752	PMH-ED17 50w.	MED	2100	40.3 lb.	2
UQB-20753	PMH-ED17 70w.	MED	4000	40.3 lb.	2
UQB-20754	PMH-ED17 100w.	MED	6500	40.5 lb.	2
UQB-20755	PMH-ED17 150w.	MED	10000	41.8 lb.	2
UQB-20756	PMH-ED17 50w.	MED	3600	40.3 lb.	2
UQB-20757	PMH-ED17 70w.	MED	5450	40.3 lb.	2
UQB-20758	PMH-ED17 100w.	MED	8550	41.0 lb.	2
UQB-20759	PMH-ED17 150w.	MED	14400	42.3 lb.	2

## Qba post top luminaire LED

Model No.	Lamp	Light output	LED colour	Power W	Beam	Weight	Picture	Dimmable 1-10V
UQB-20941-W27	1 LED	1585 lm	2700K	41	132°	39.6 lb.	1	•
UQB-20941-W30	1 LED	1688 lm	3000K	41	132°	39.6 lb.	1	•
UQB-20941-W40	1 LED	1871 lm	4000K	41	132°	39.6 lb.	1	•



Base cover come with lighting column



LED Color in 3000K



LED Color in 4000K

# Comparison Analysis

## CASE STUDY 2 *Etude de cas 2*

## OUTDOOR PARKING

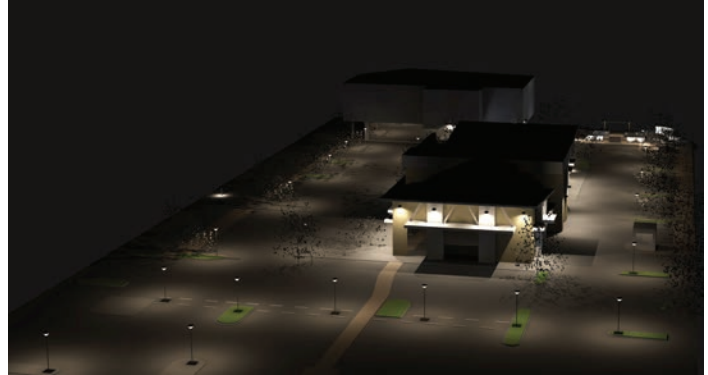


Computer generated image

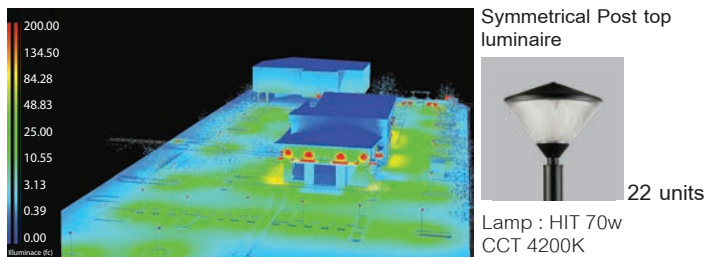
### Conventional lamp lighting plan



### LED lighting plan



### 3D False colour analysis conventional lamp



Total Power Consumption : 1,938.2 W

### Energy consumption comparison %

Operating costs ( 5 Years )

Conventional lighting plan 27,910.08 kWh

LED lighting plan 13,052.16 kWh

**53.2% saving over 5 years**

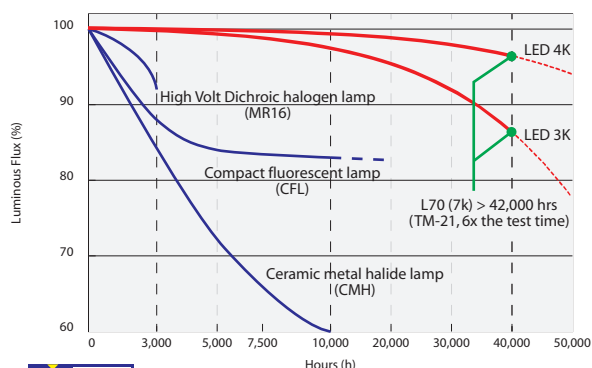
Power reduction : 14,857 kWh

\*Conditions : 8 business hours/day, 360 days/year.

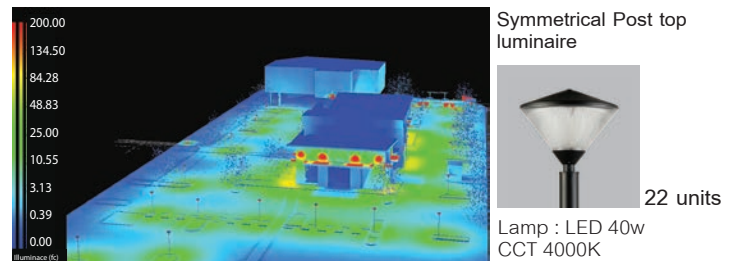
\*Comparison applies only to the fixtures indicated above.

### Reliability of luminous flux

LED maintain brightness throughout service life and exhibit higher luminous flux than conventional lamps.



### 3D False colour analysis LED lamp



Total Power Consumption : 906.7 W

### Reduction in CO<sub>2</sub> emissions

Conventional lighting plan 11.86t

LED lighting plan 5.55t

\*Conditions : 8 business hours/day, 360 days/year.

CO<sub>2</sub> emission : 0.425 Kg/kWh, calculated in 5 year.

\*Comparison applies only to the fixtures indicated above.

### Brightness equivalent to convention fixtures

Head to head comparison between LED & Conventional lamp.

